

Building Bayesian models: Why bother if you don't believe?

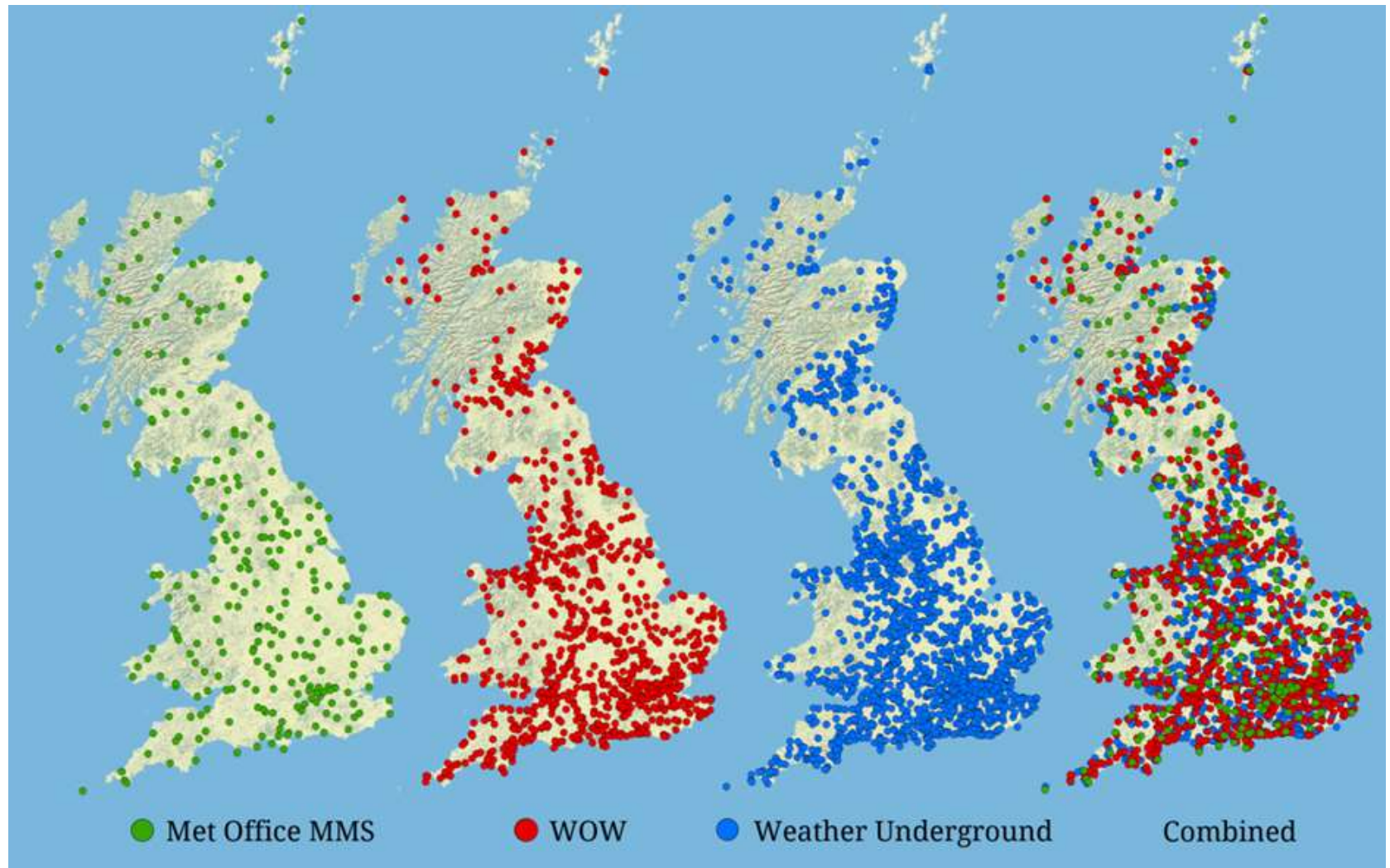
Dan Cornford, Simon Bell
Aston University

EPSRC

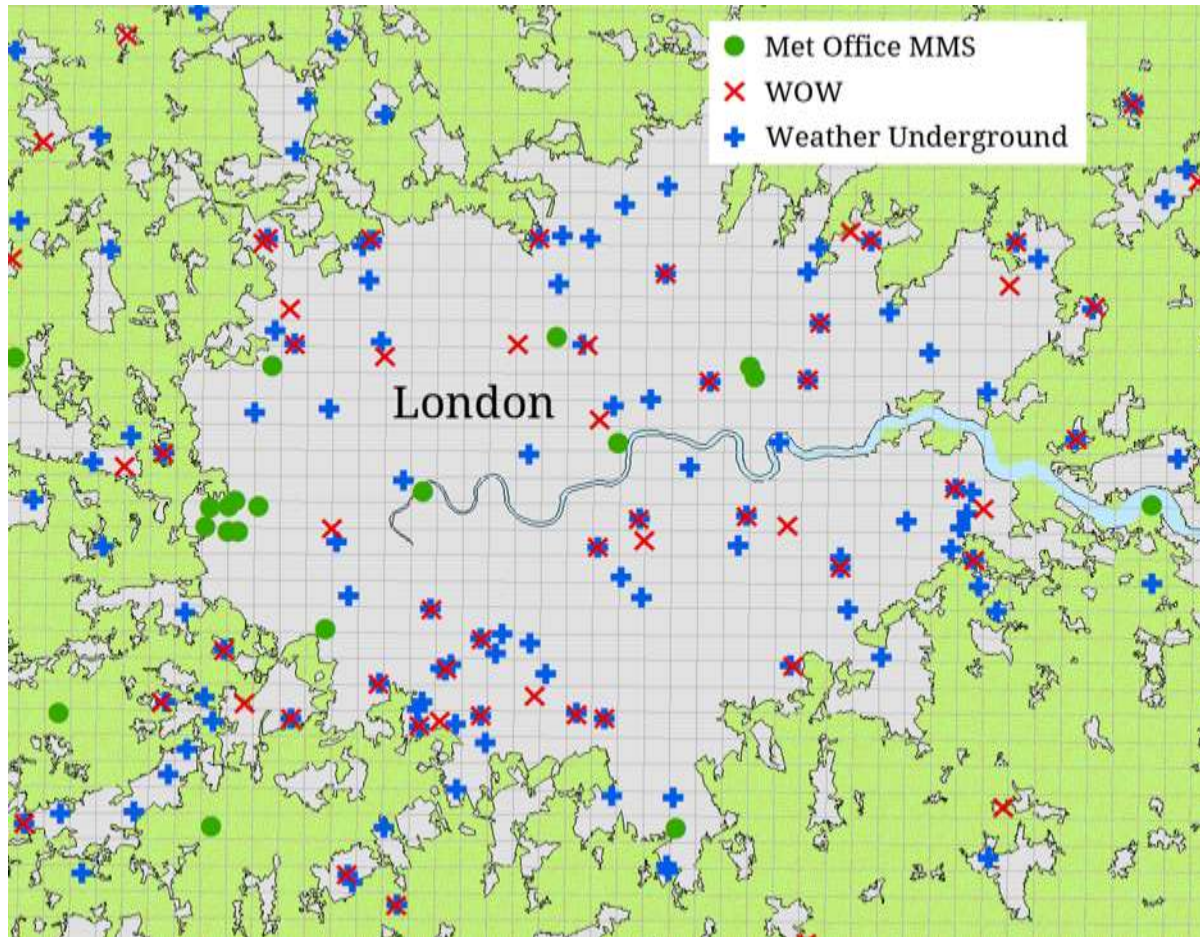
Engineering and Physical Sciences
Research Council



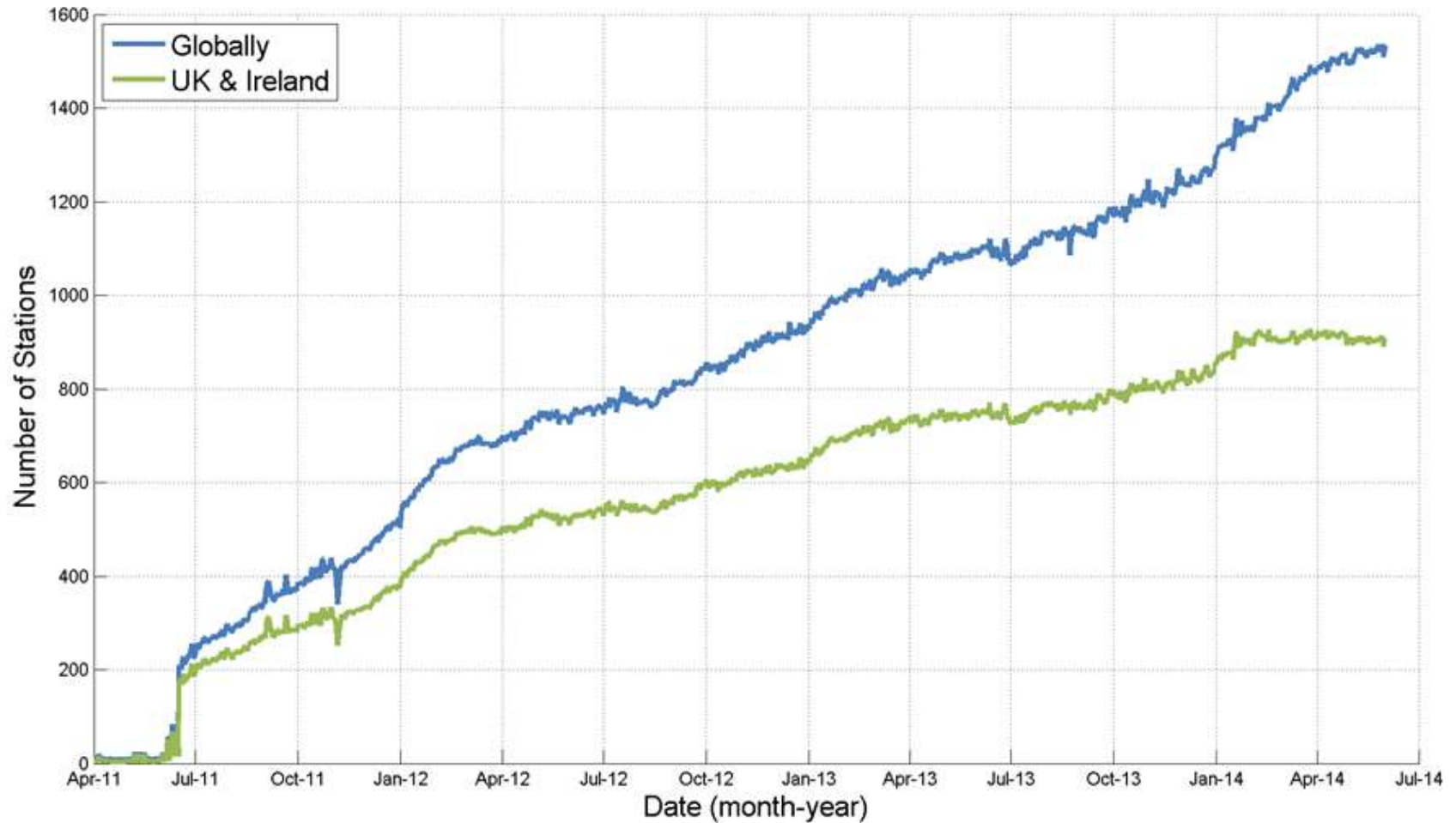
Spatial distribution of citizen weather stations



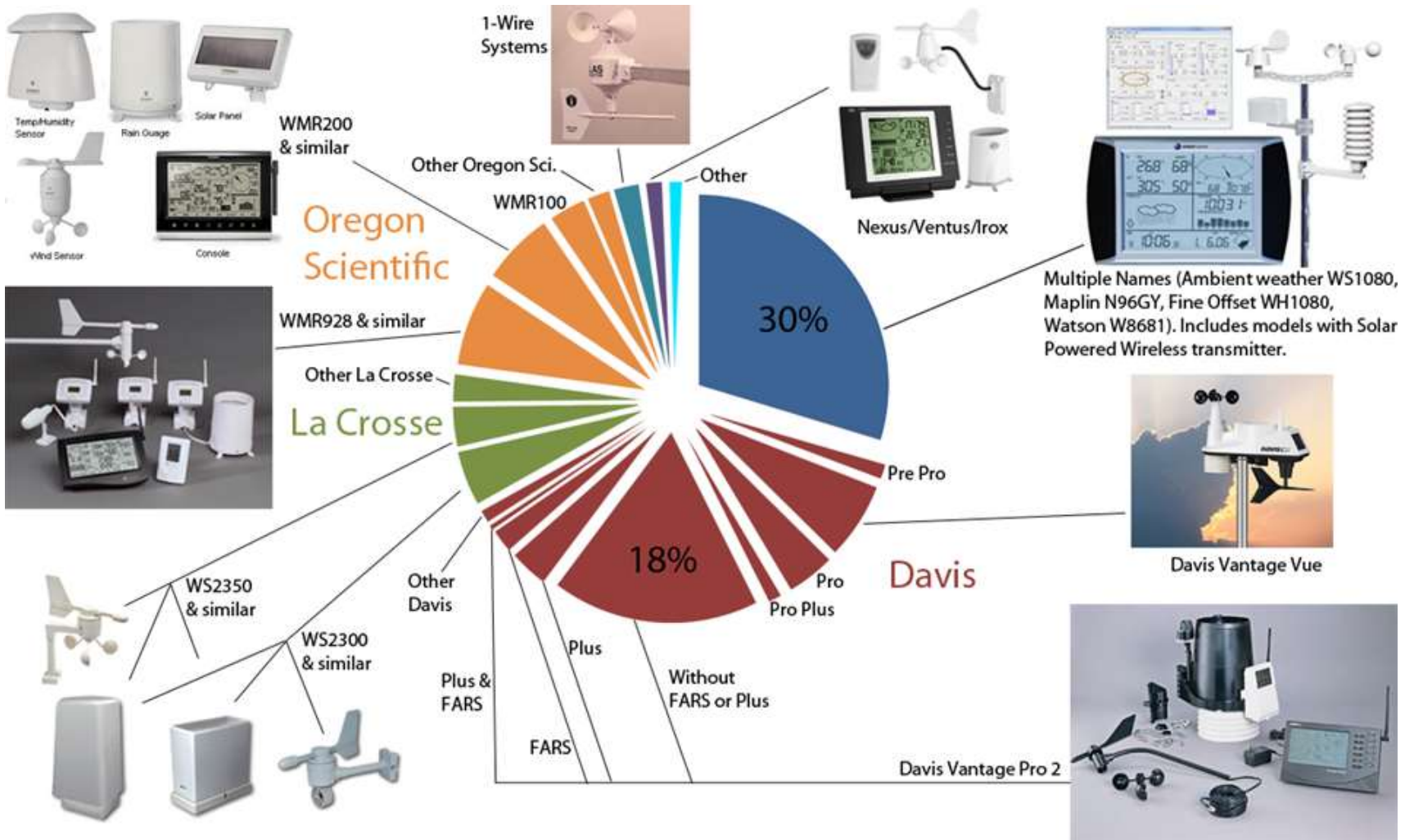
In more detail ...

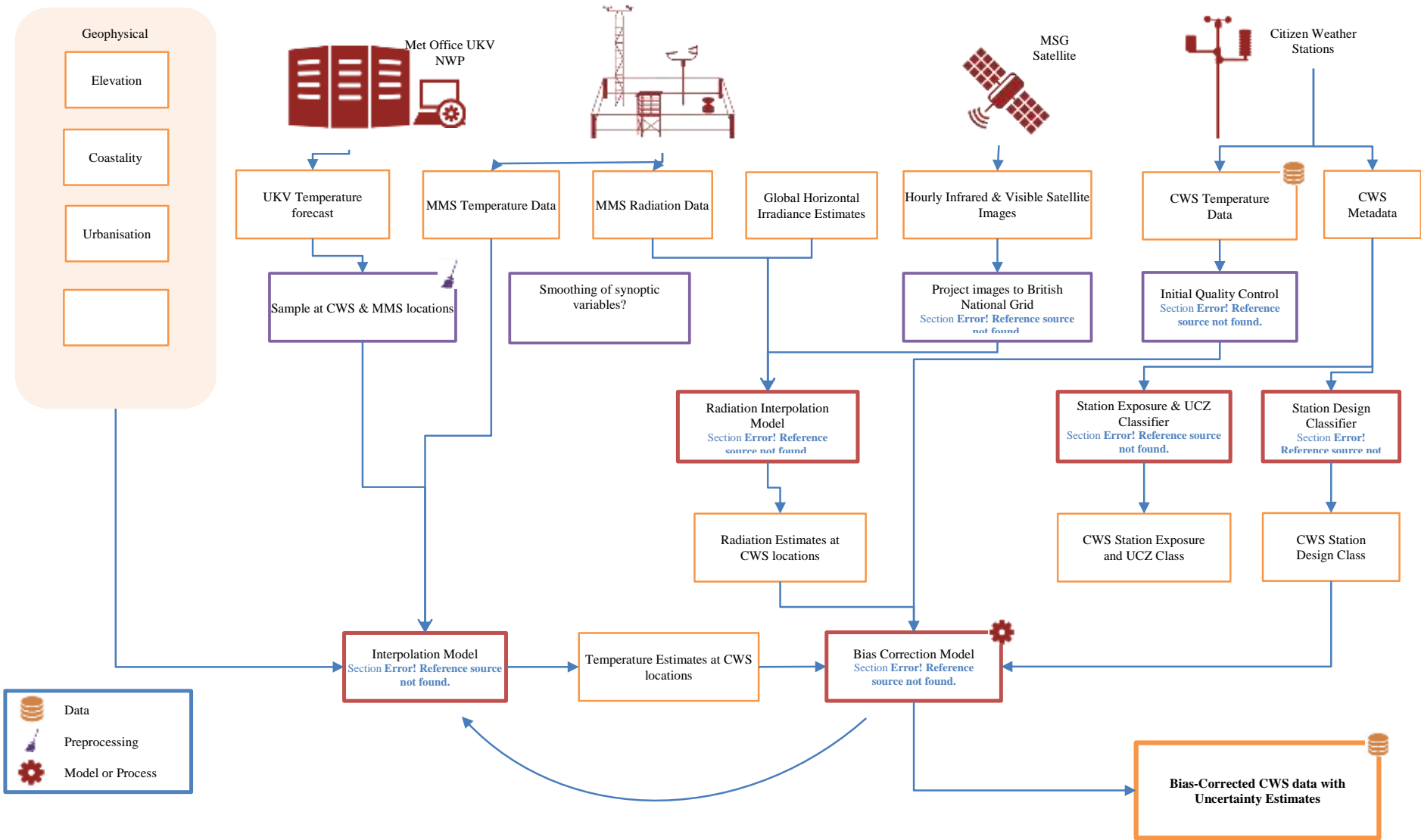


Growth of citizen weather data

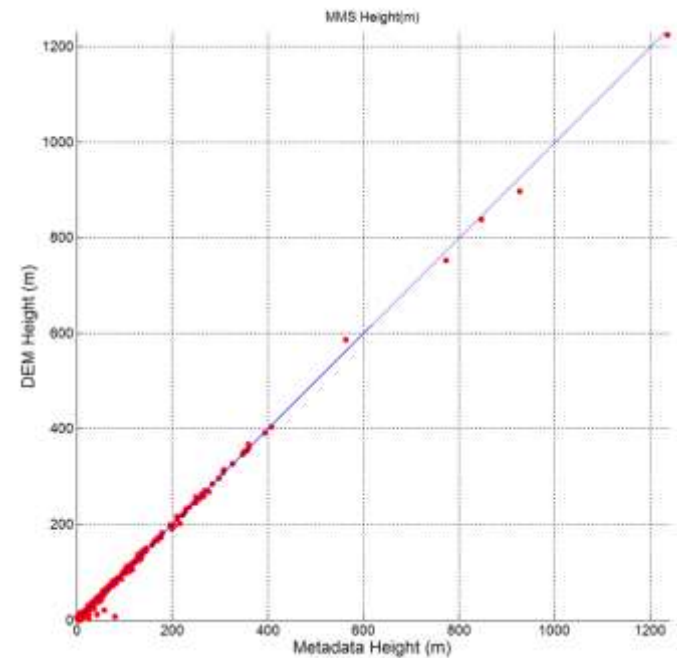
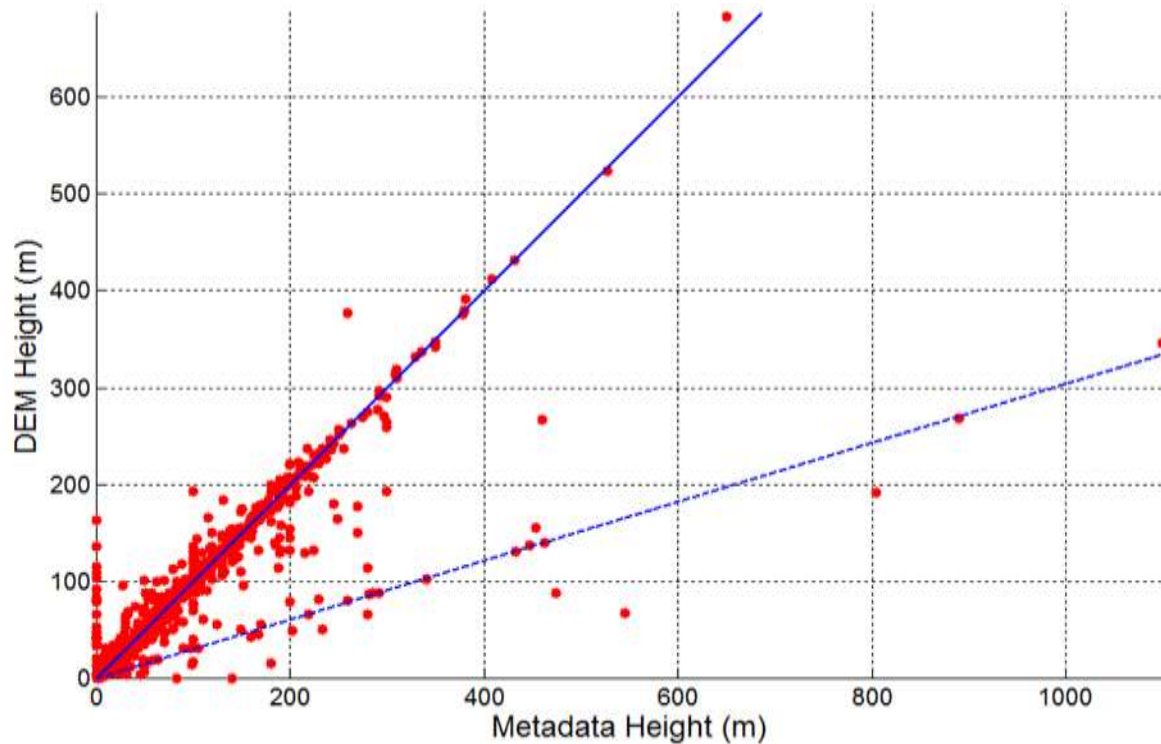


Types of stations





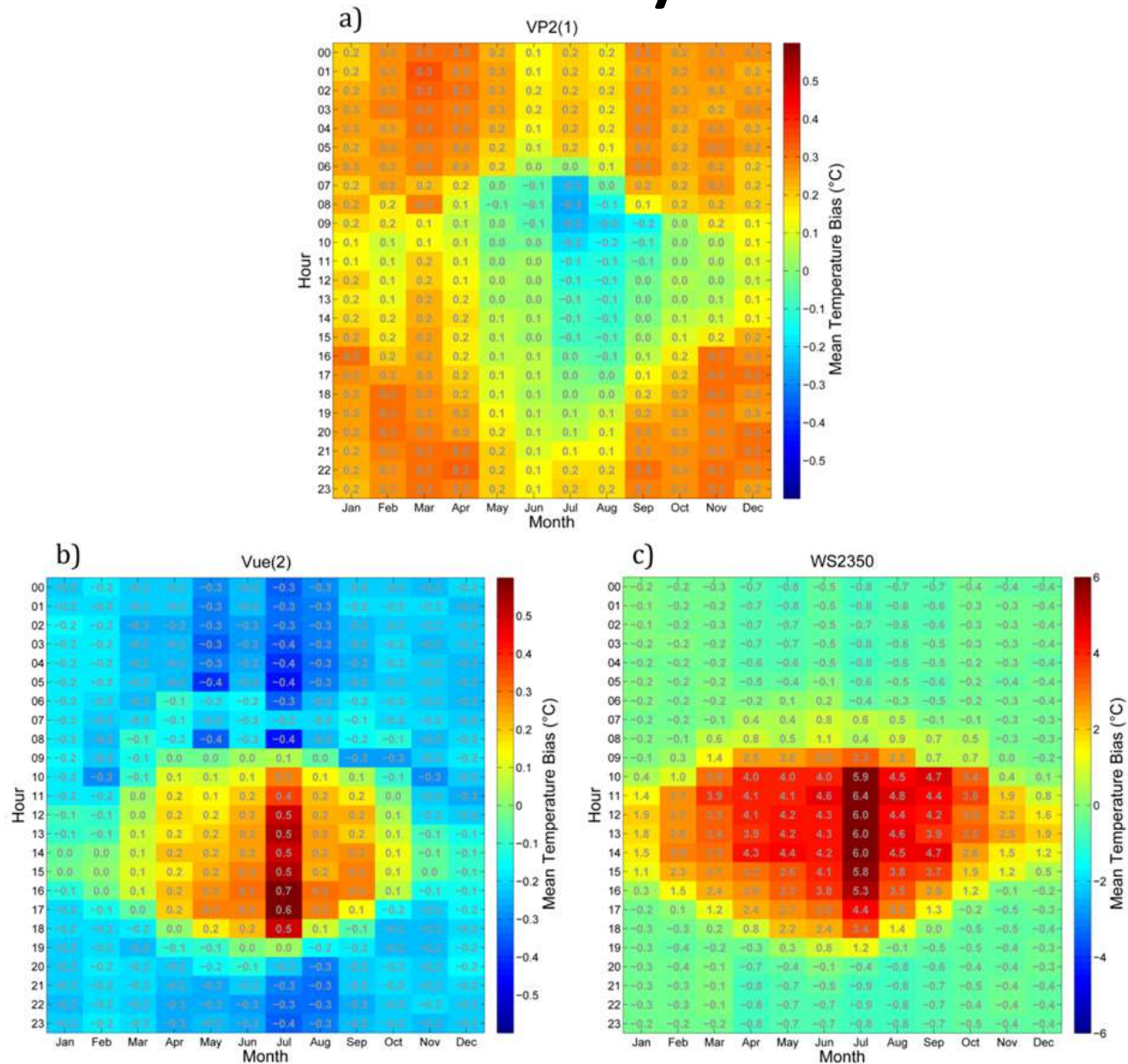
Data quality issues



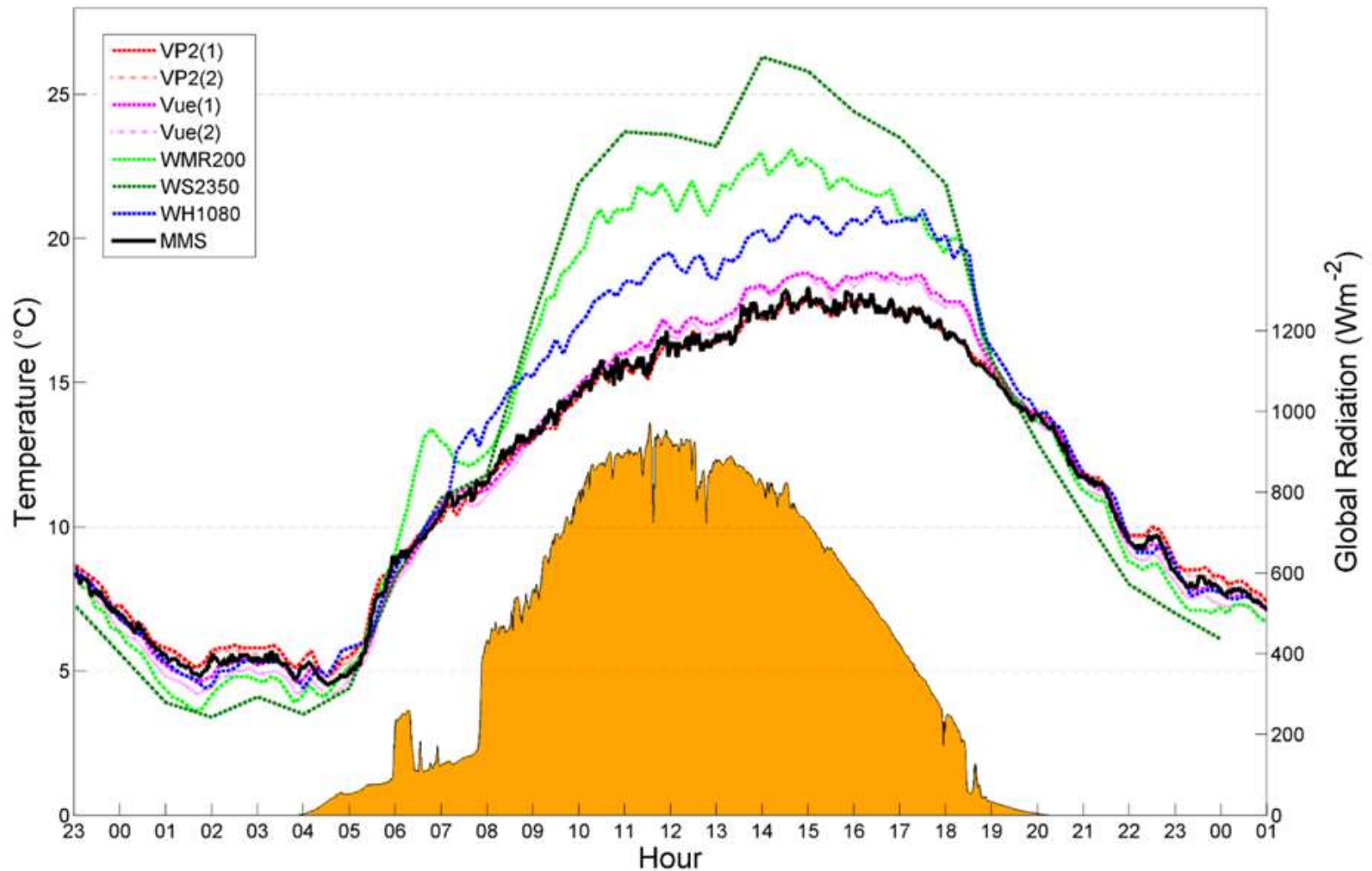
Assessing station quality



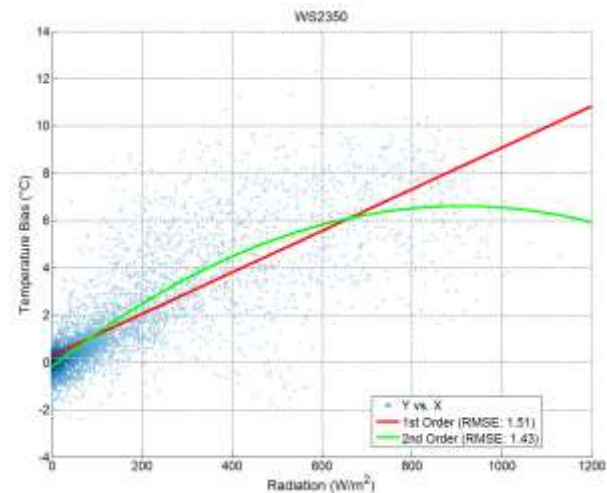
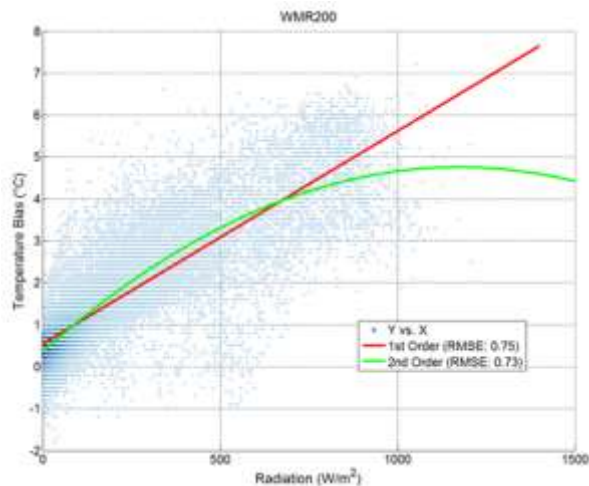
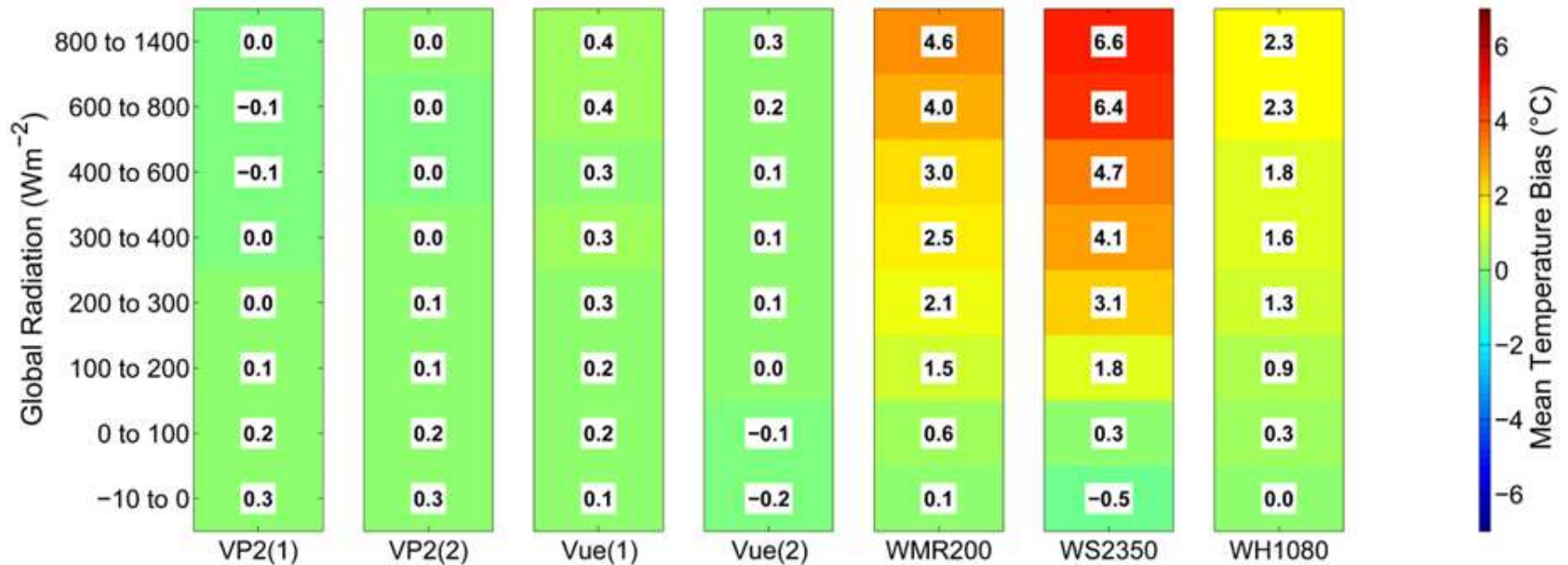
That is totally biased



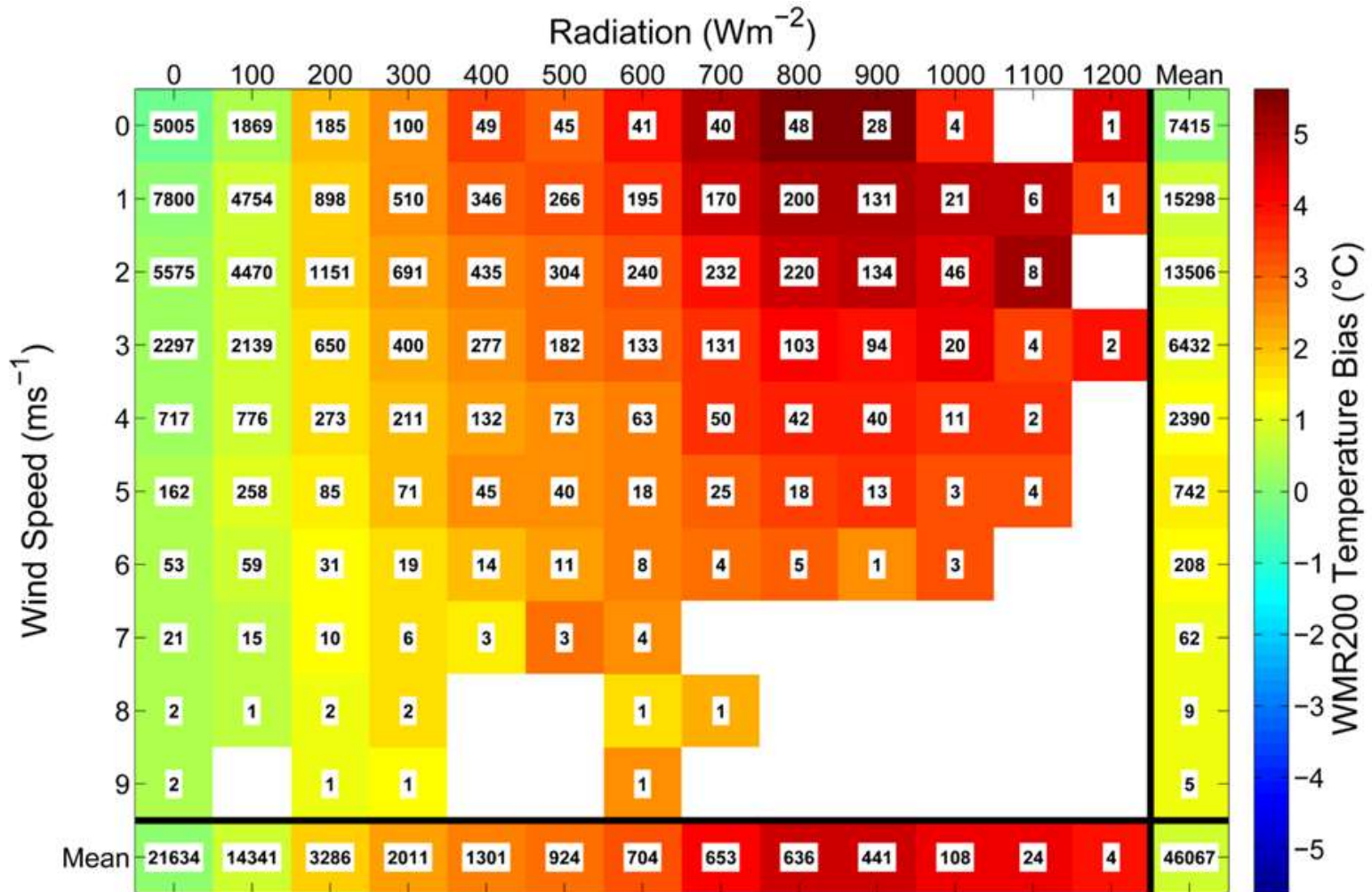
Exploring why – the role of physics and graphics



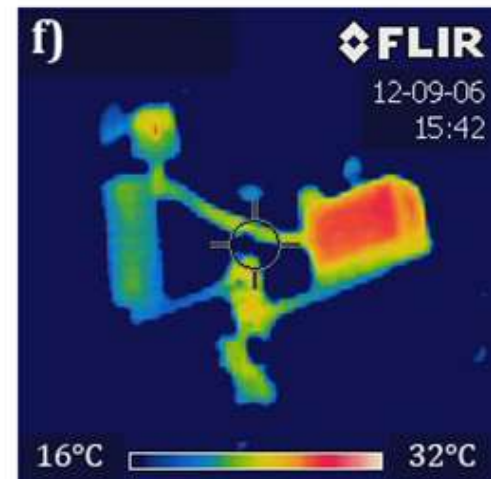
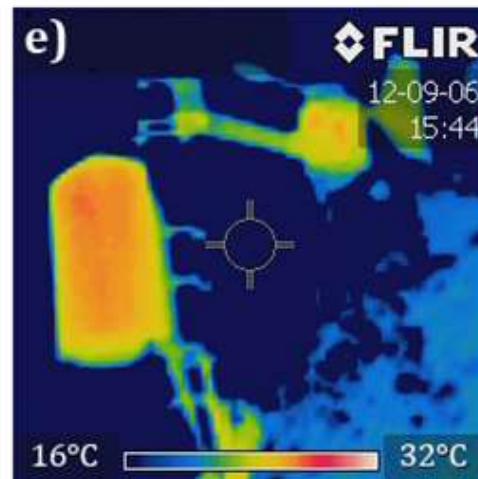
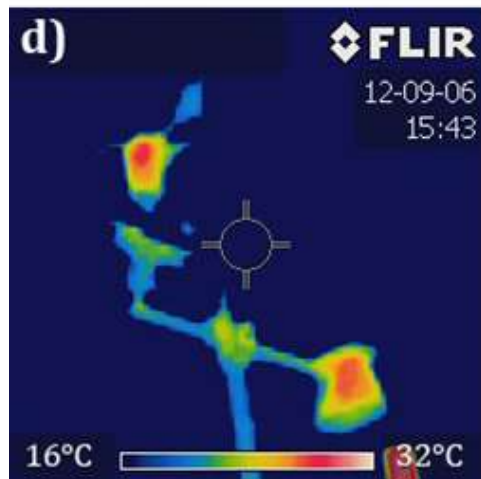
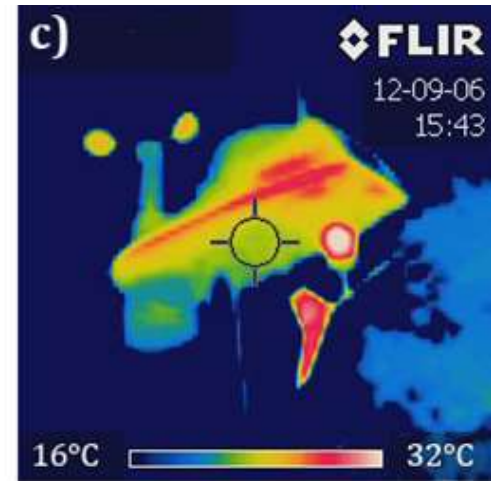
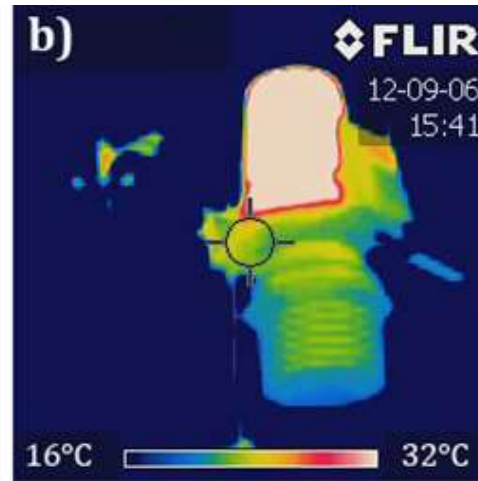
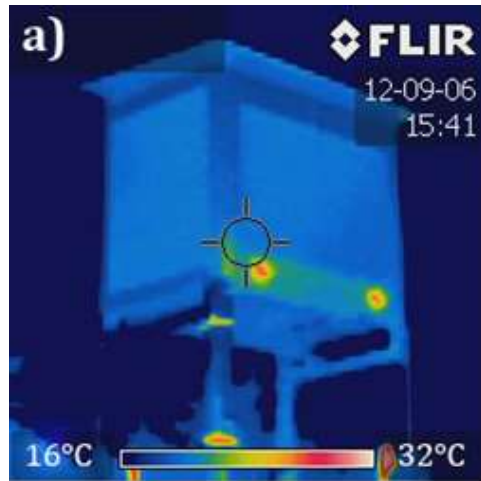
Building a model



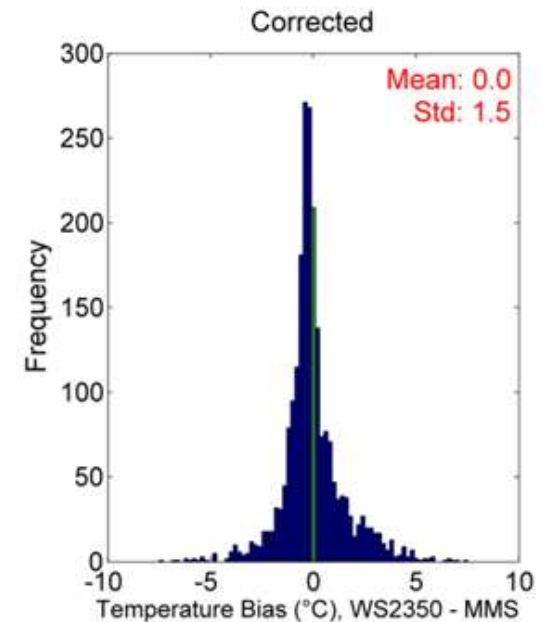
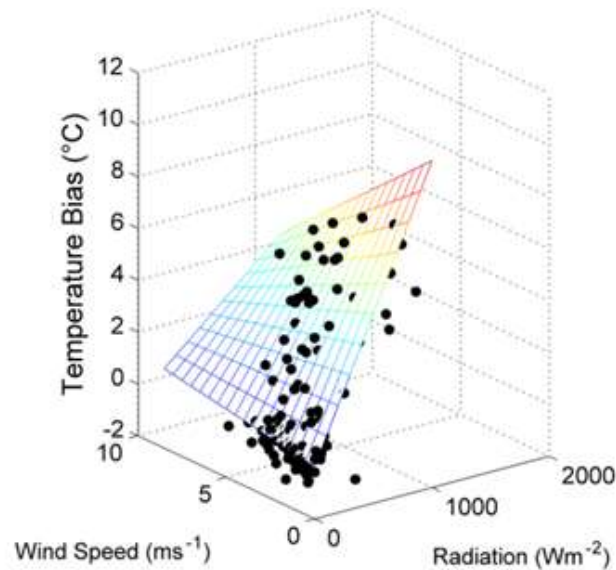
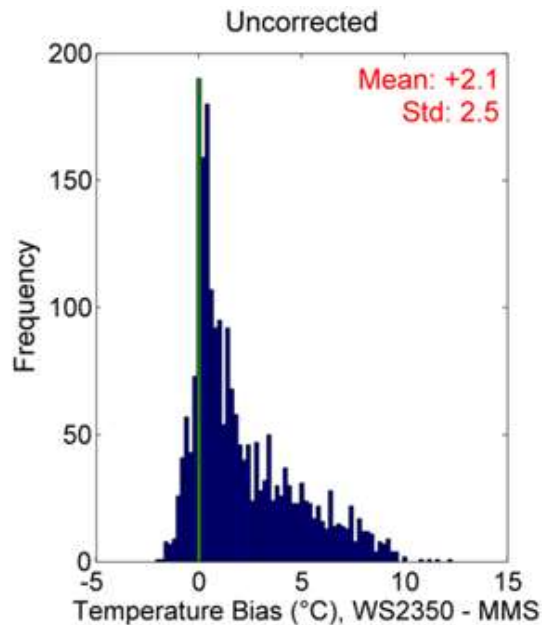
Other explanations?



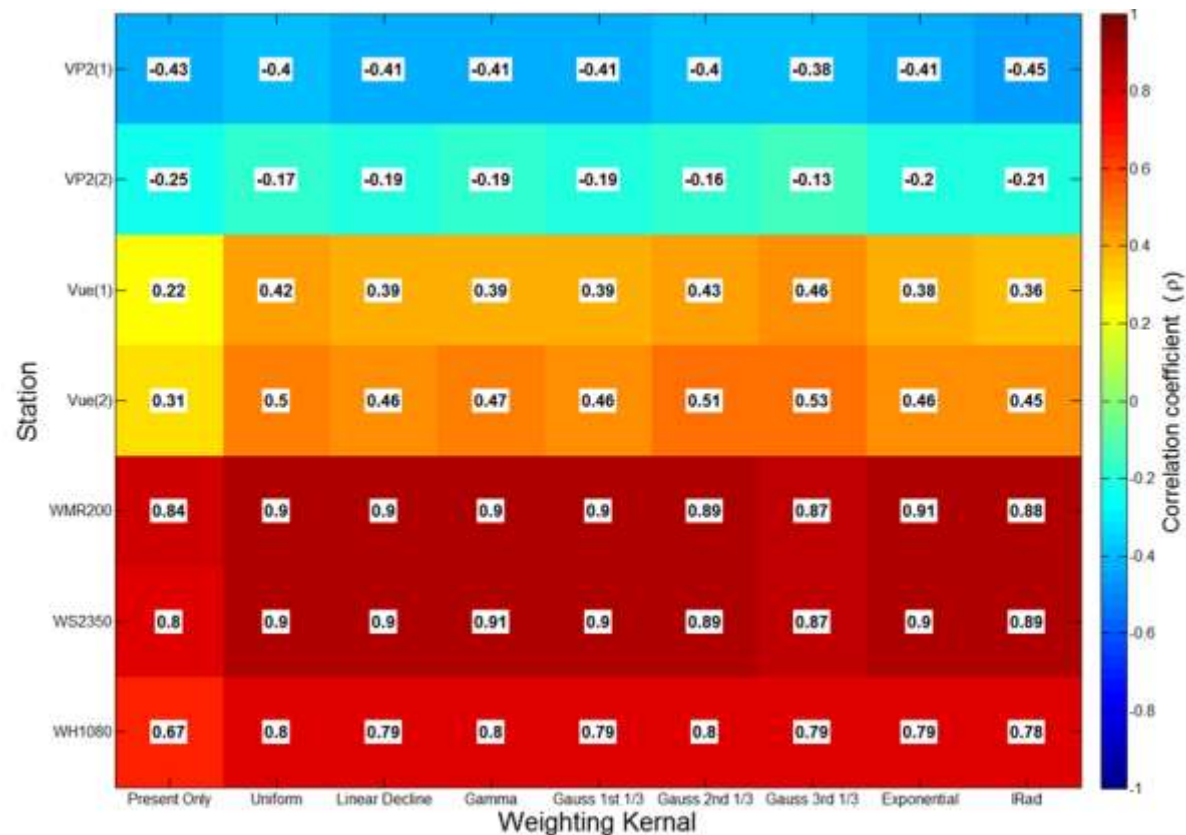
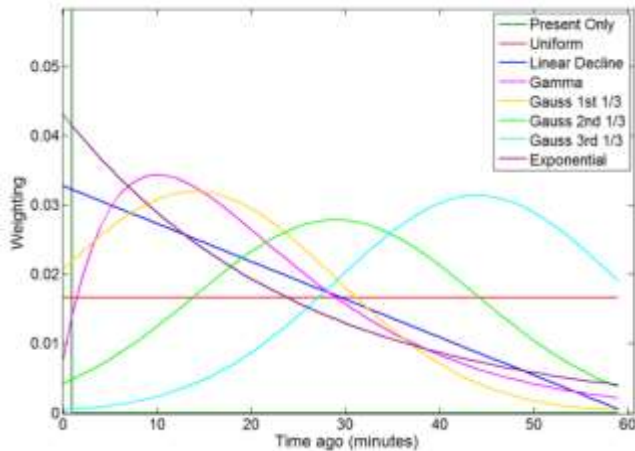
Confirmation – a mechanism



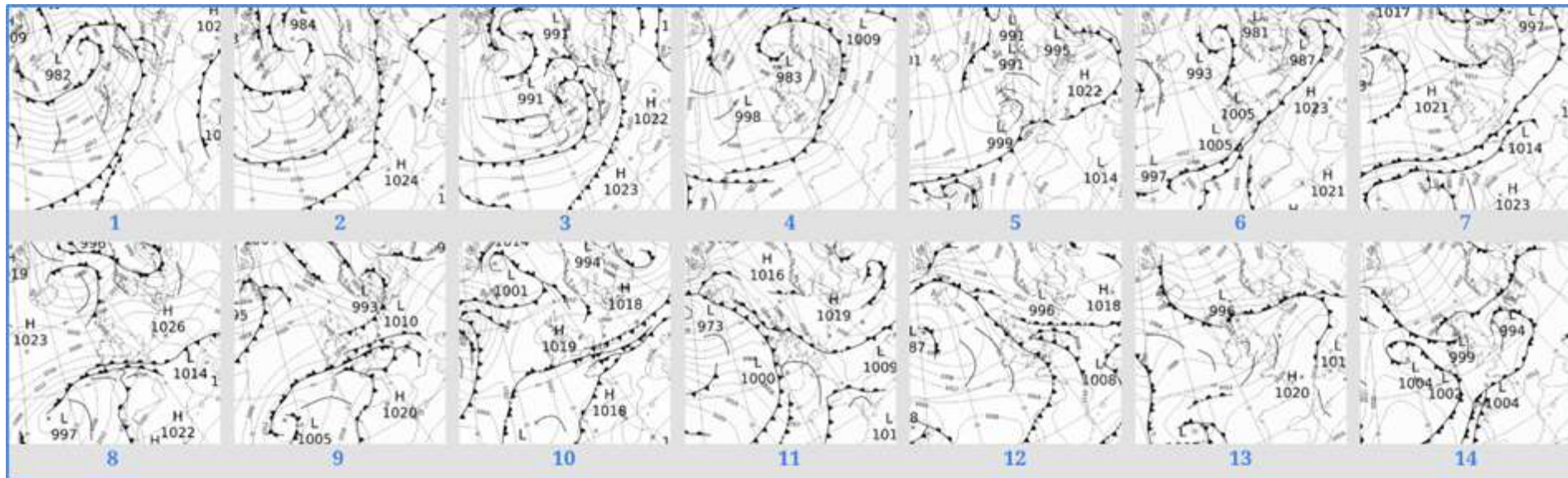
Simple models can go a long way



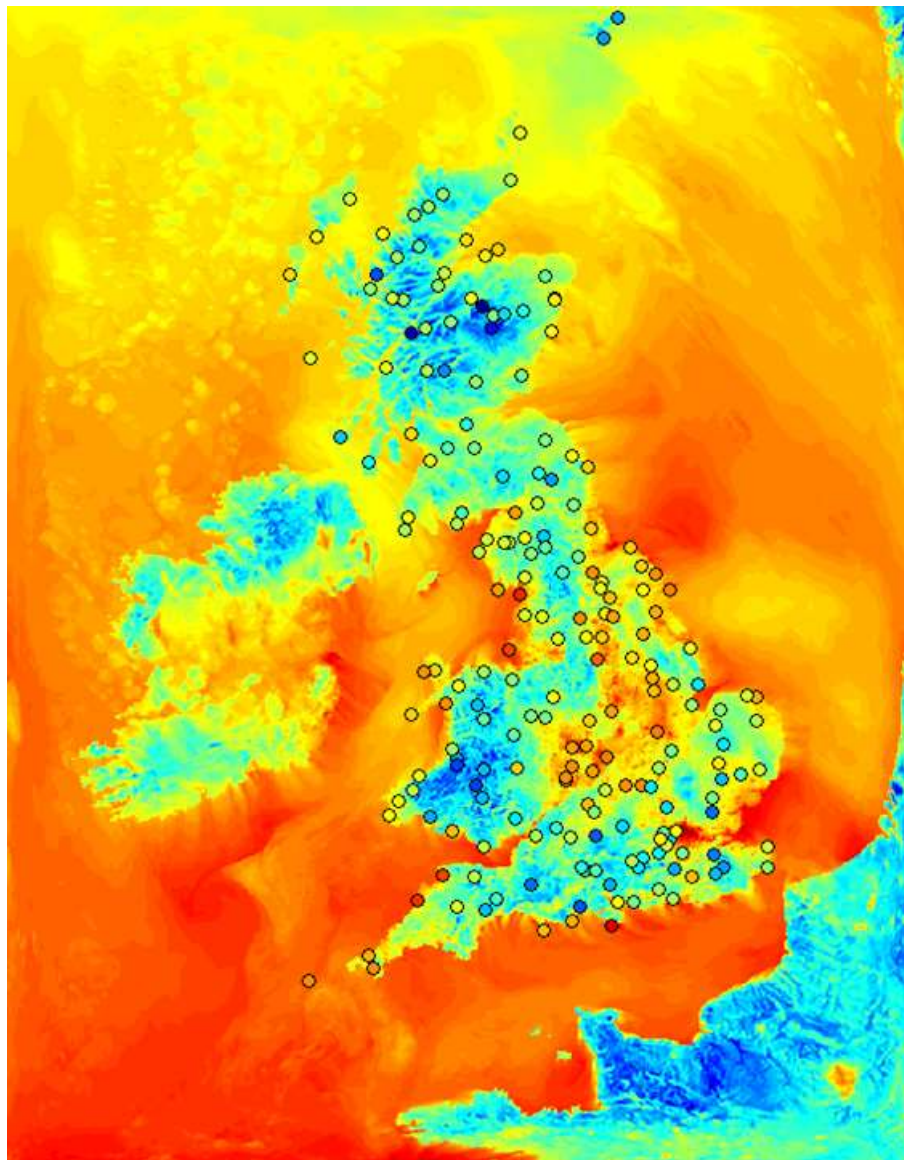
Marginal improvements, better physics?



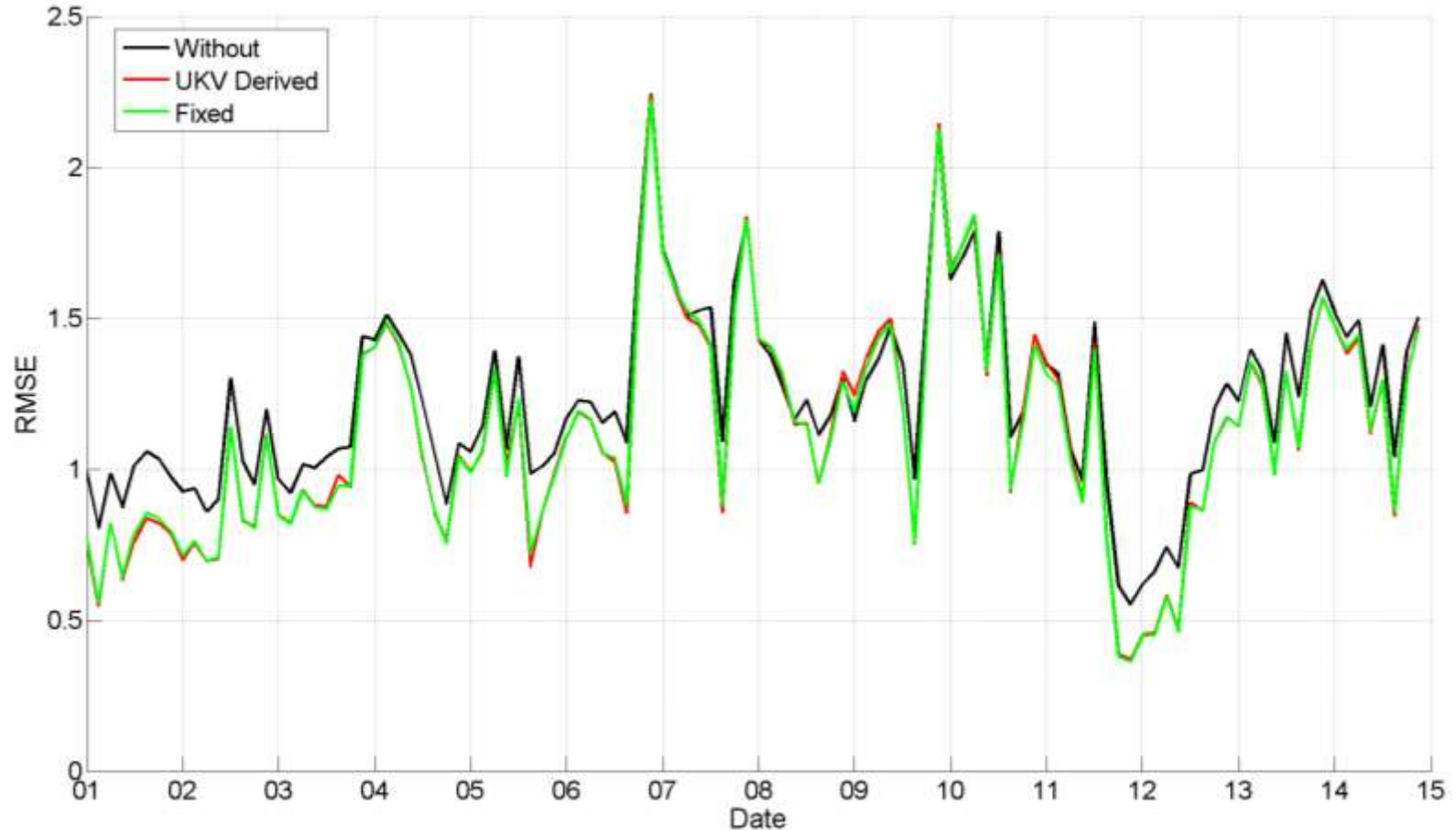
What is a case study?



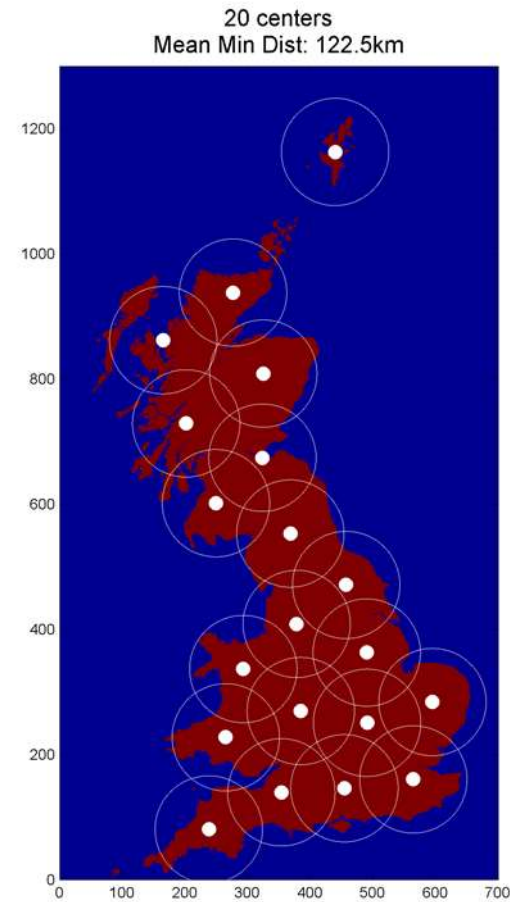
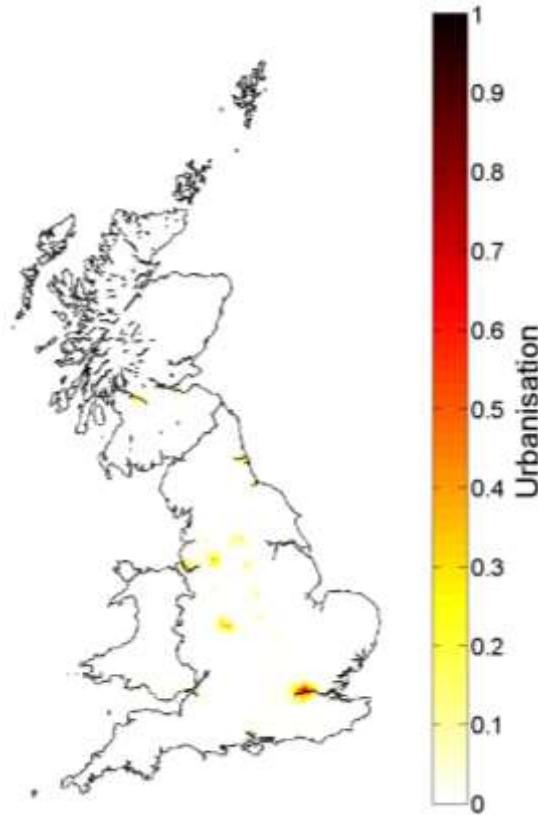
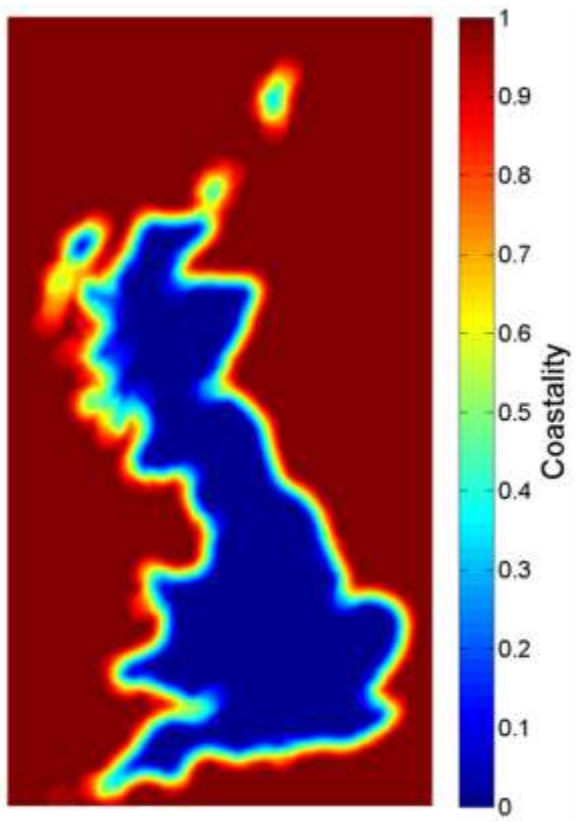
Really complex priors ...



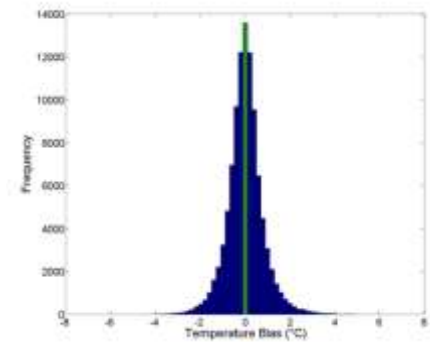
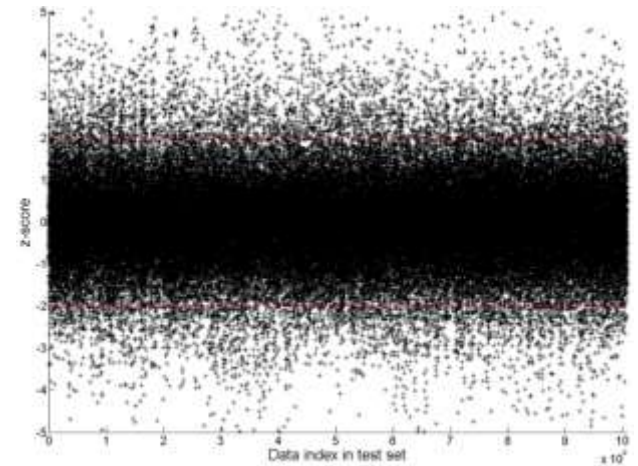
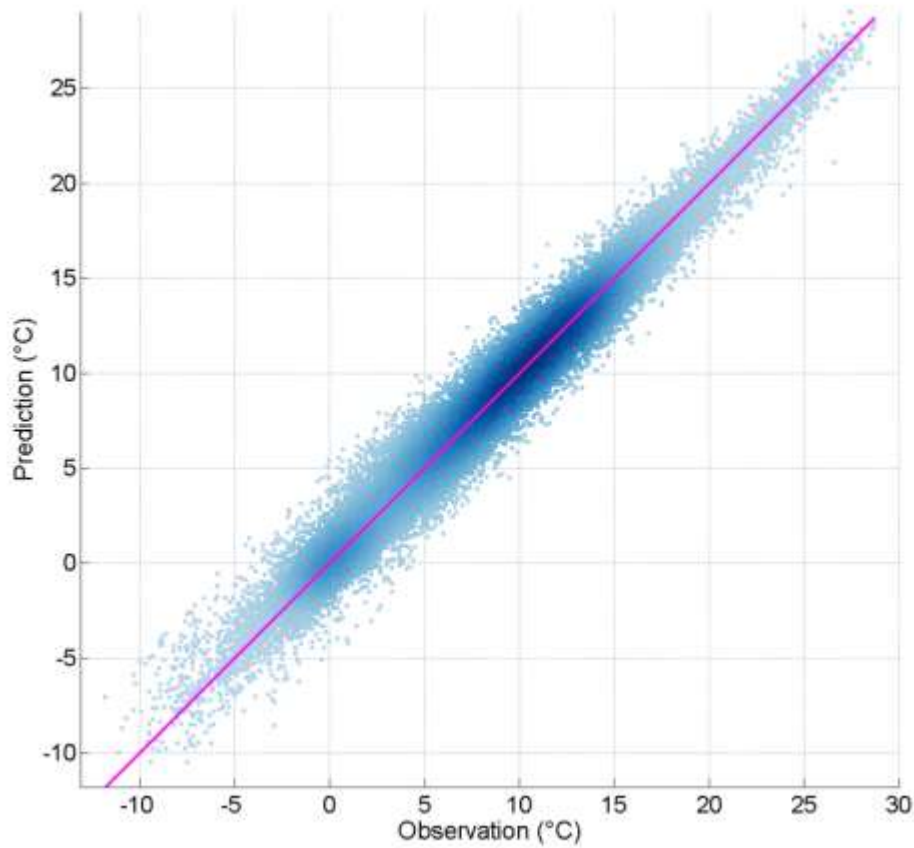
Simple corrections can help



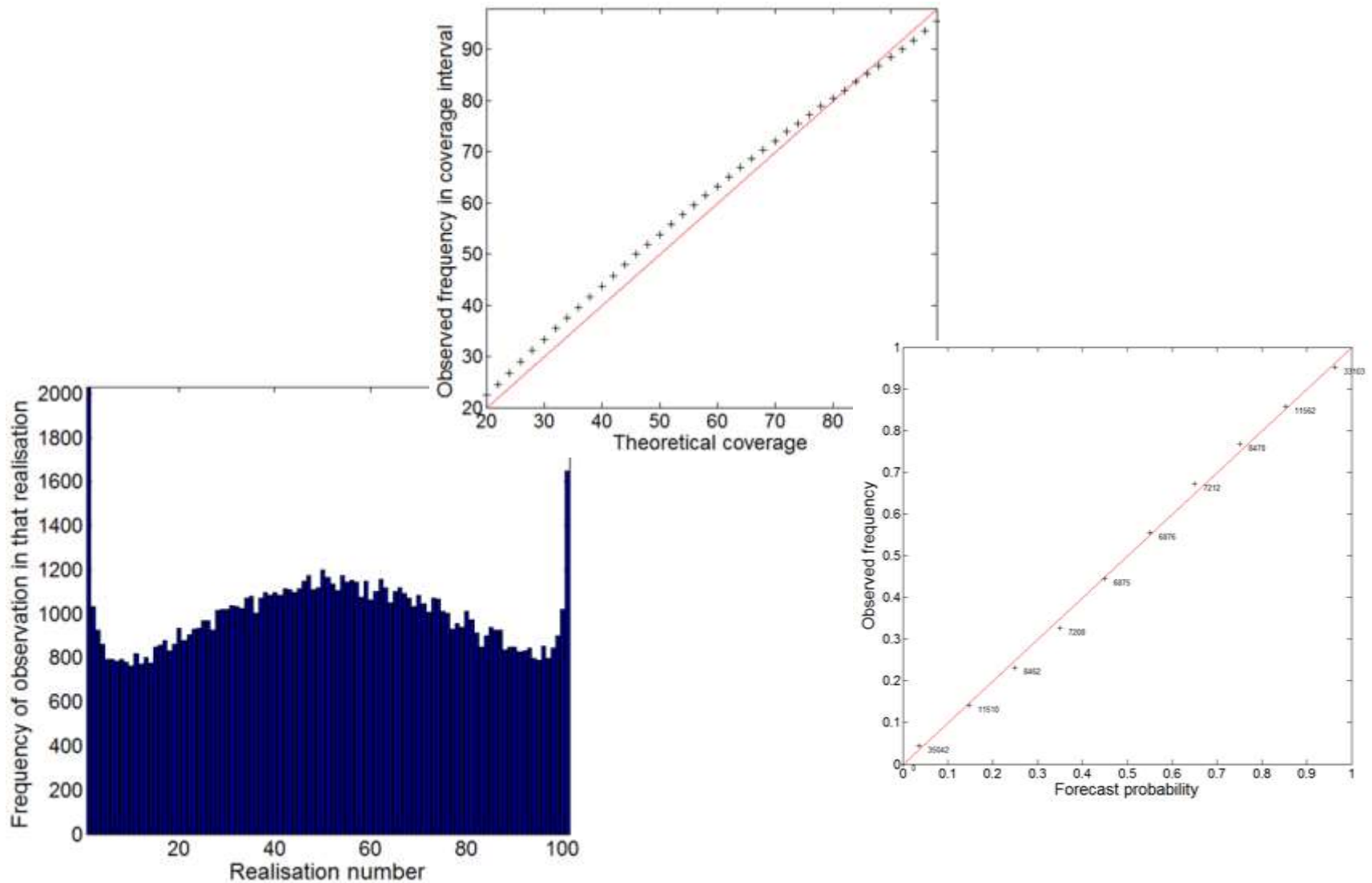
Select your inputs carefully ...



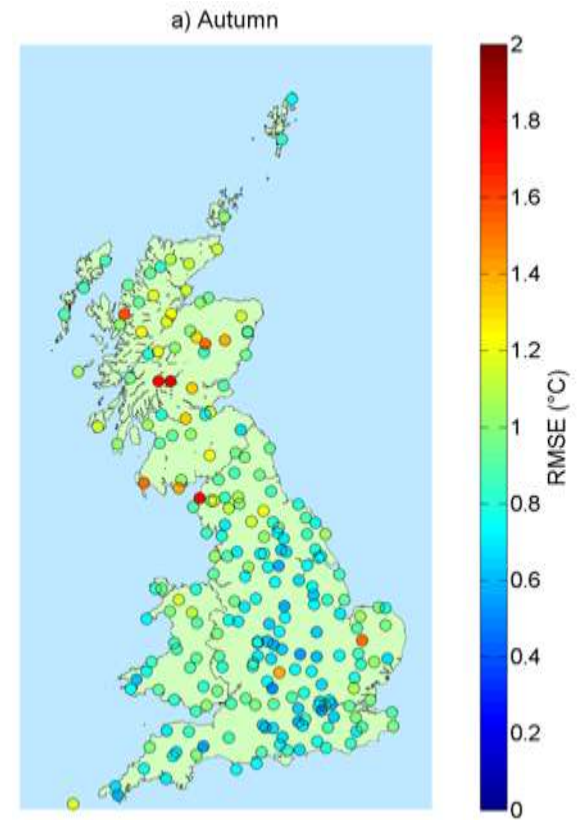
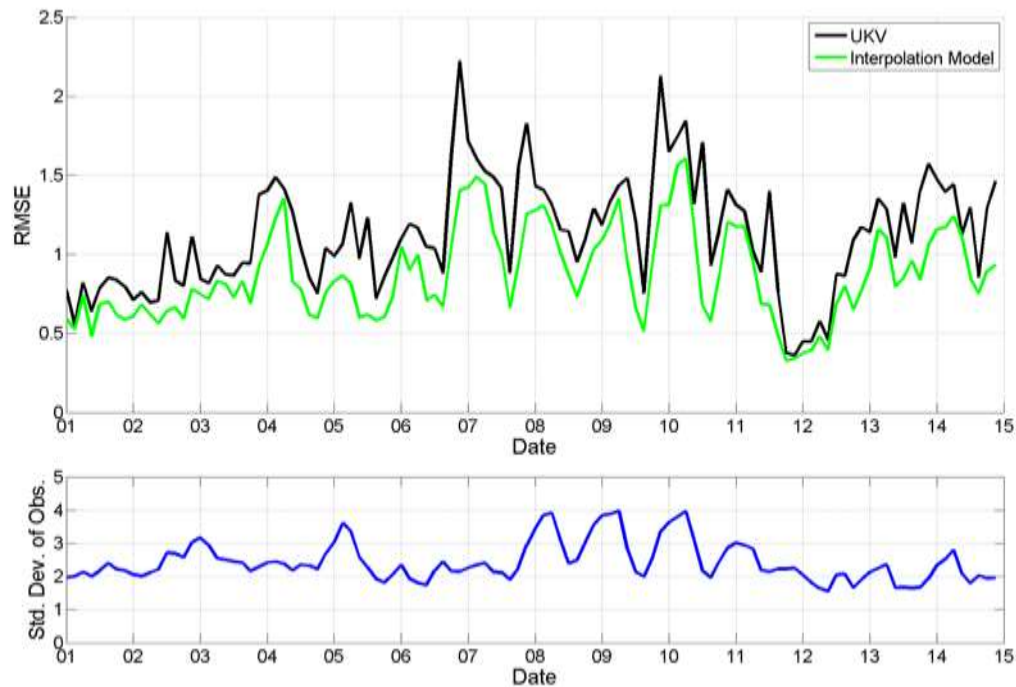
And validate



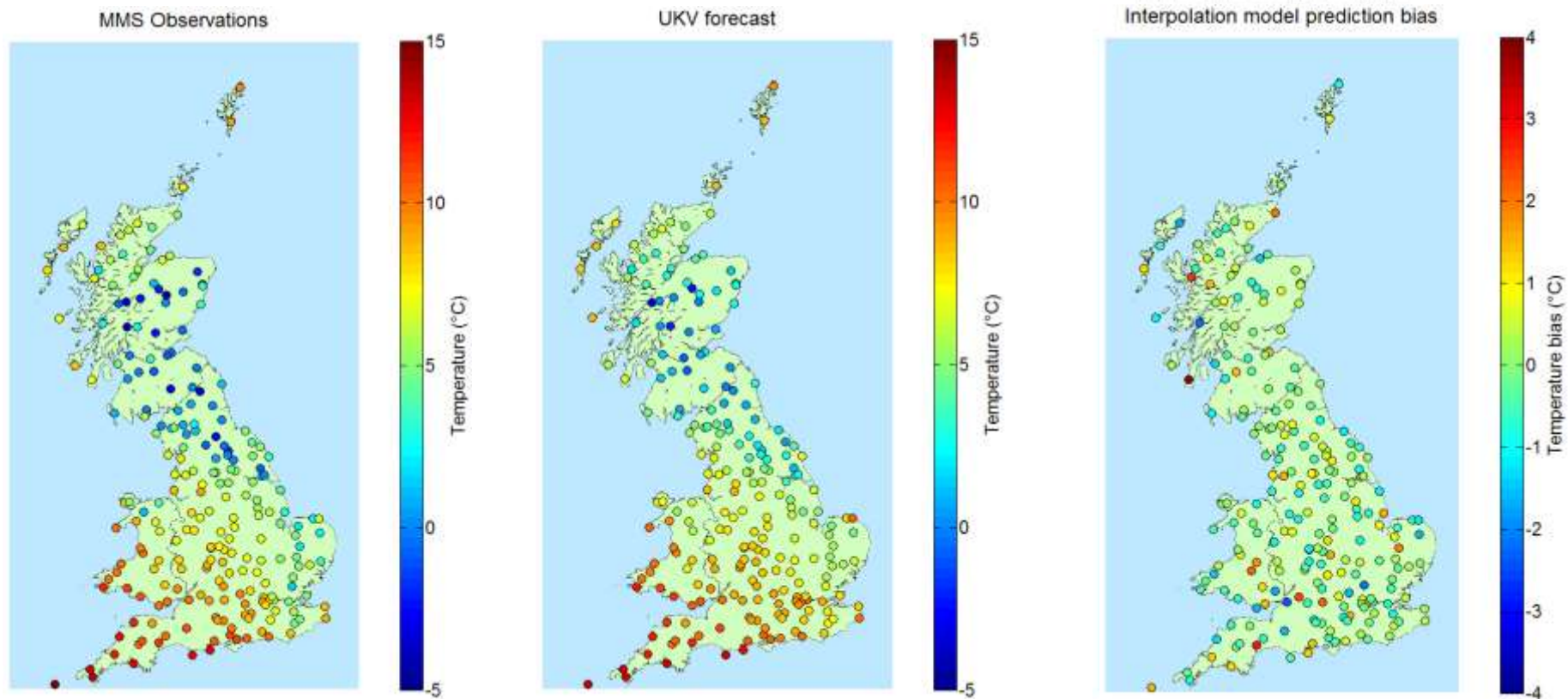
Carefully ...



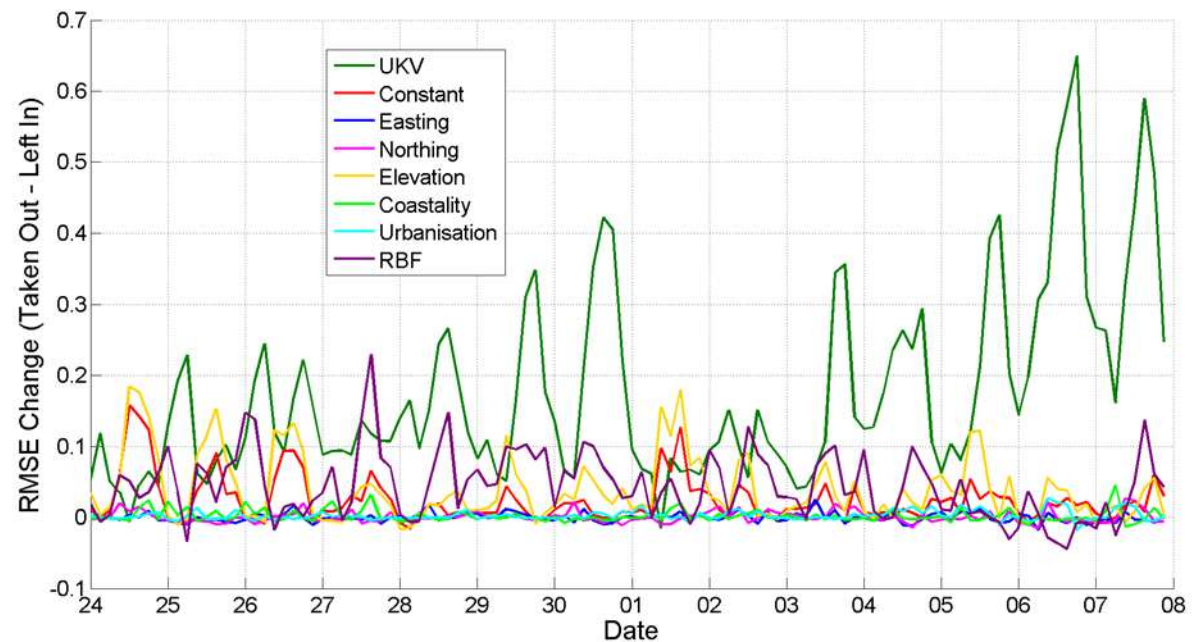
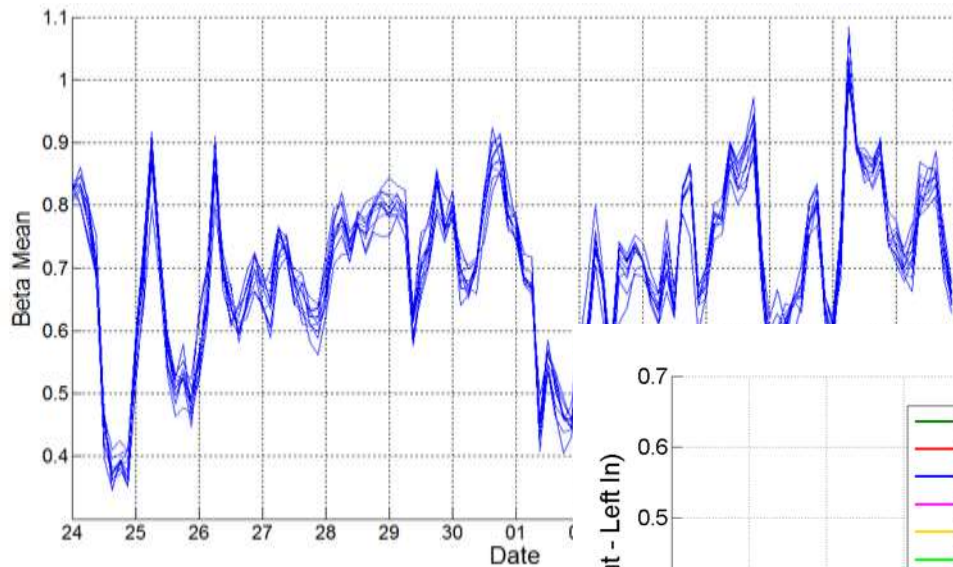
Sir Plotalot



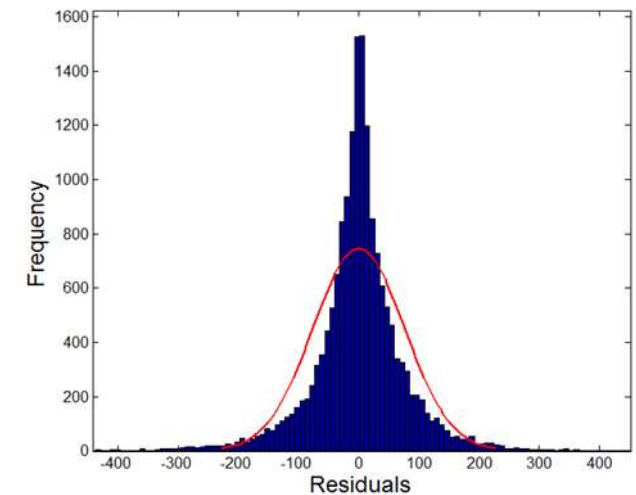
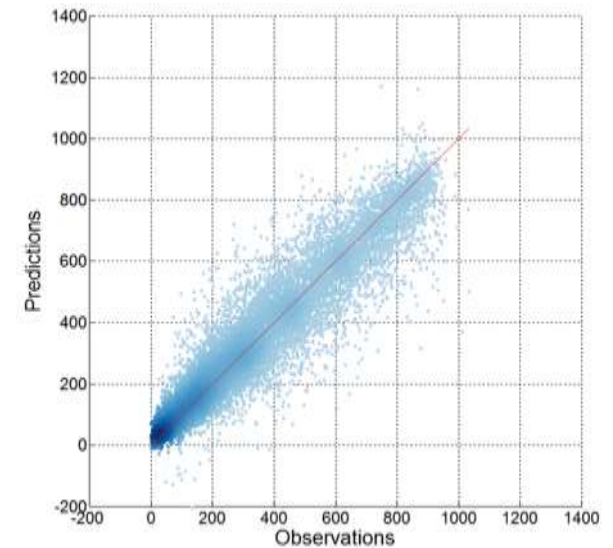
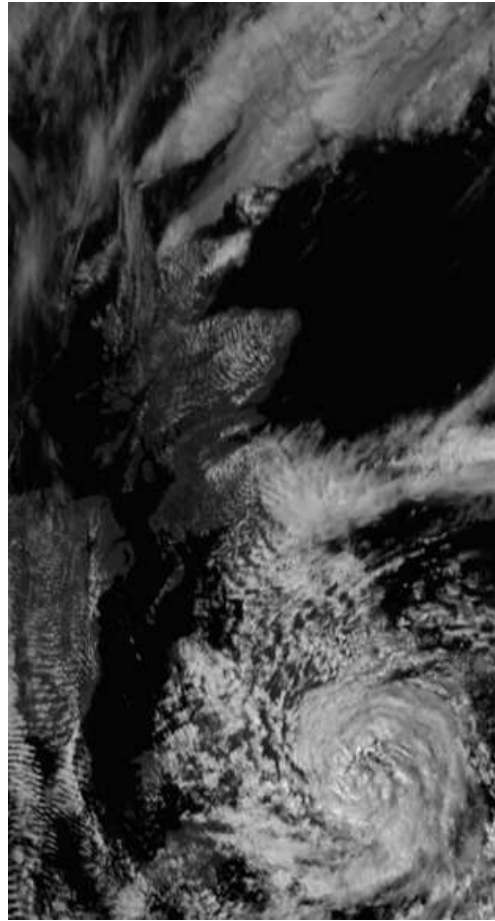
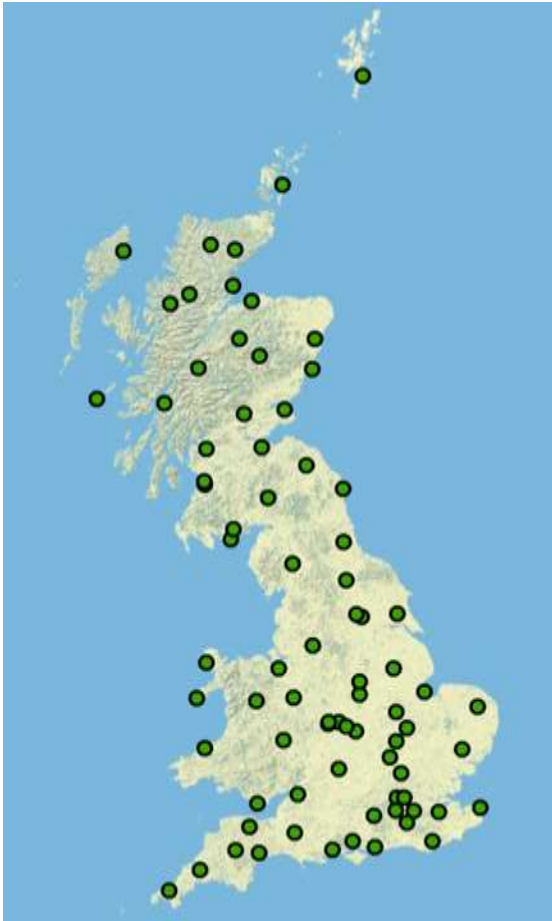
Seriously ...



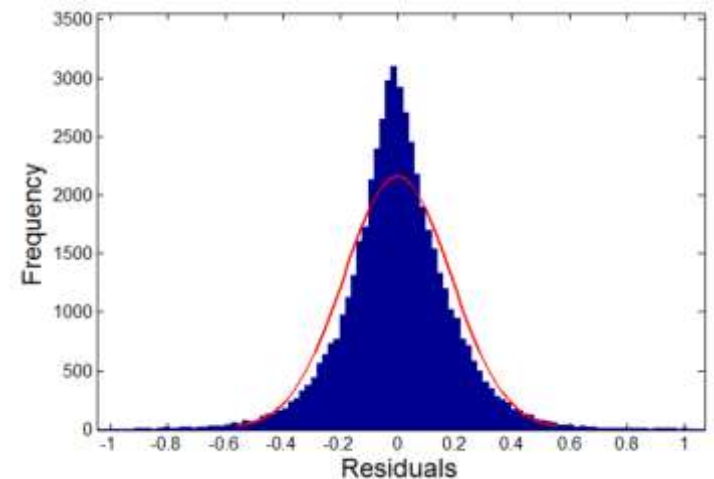
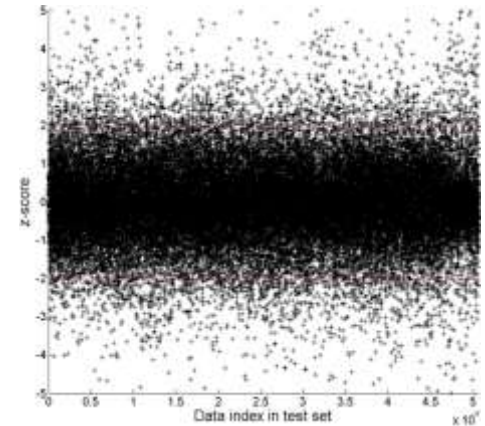
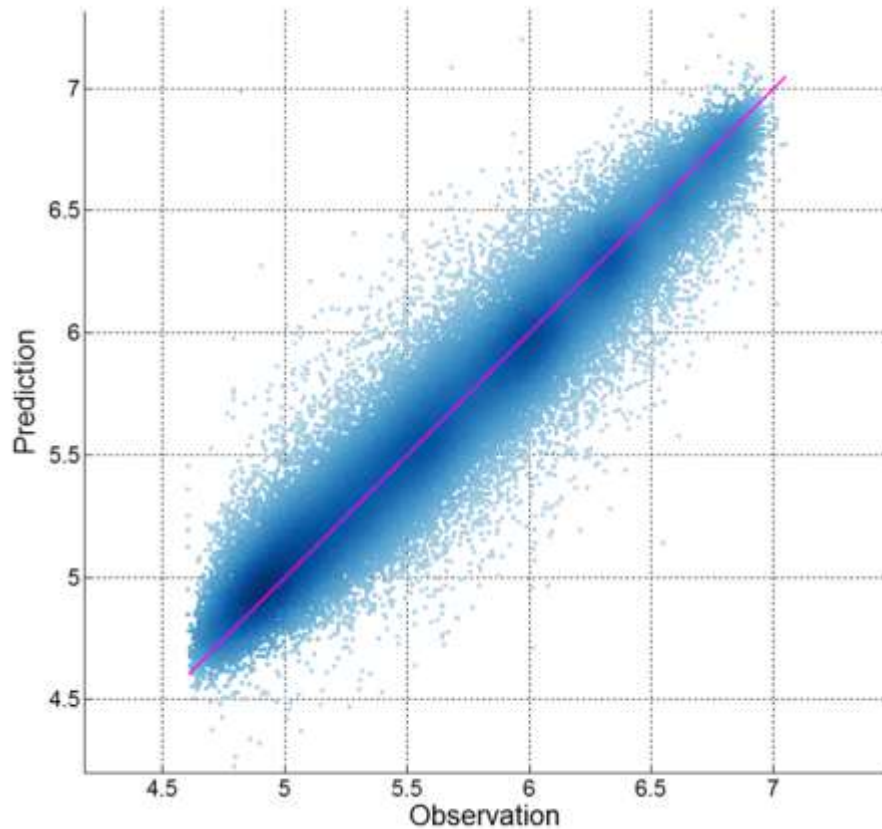
Understanding your model



Using your knowledge is never easy



But always look for simple solutions





Ask the public ...

Penelope, you are logged in. Let's get classifying!

Step 1. Select which attribute to classify by?

Select one






Exposure

Urban Climate Zone

Step 2. What type of stations would you like to classify?

Select at least one.



Primary Met Office

Secondary Met Office

WOW

Step 3. Click Begin.

Begin Classifying

Not feeling it today? Then Logout

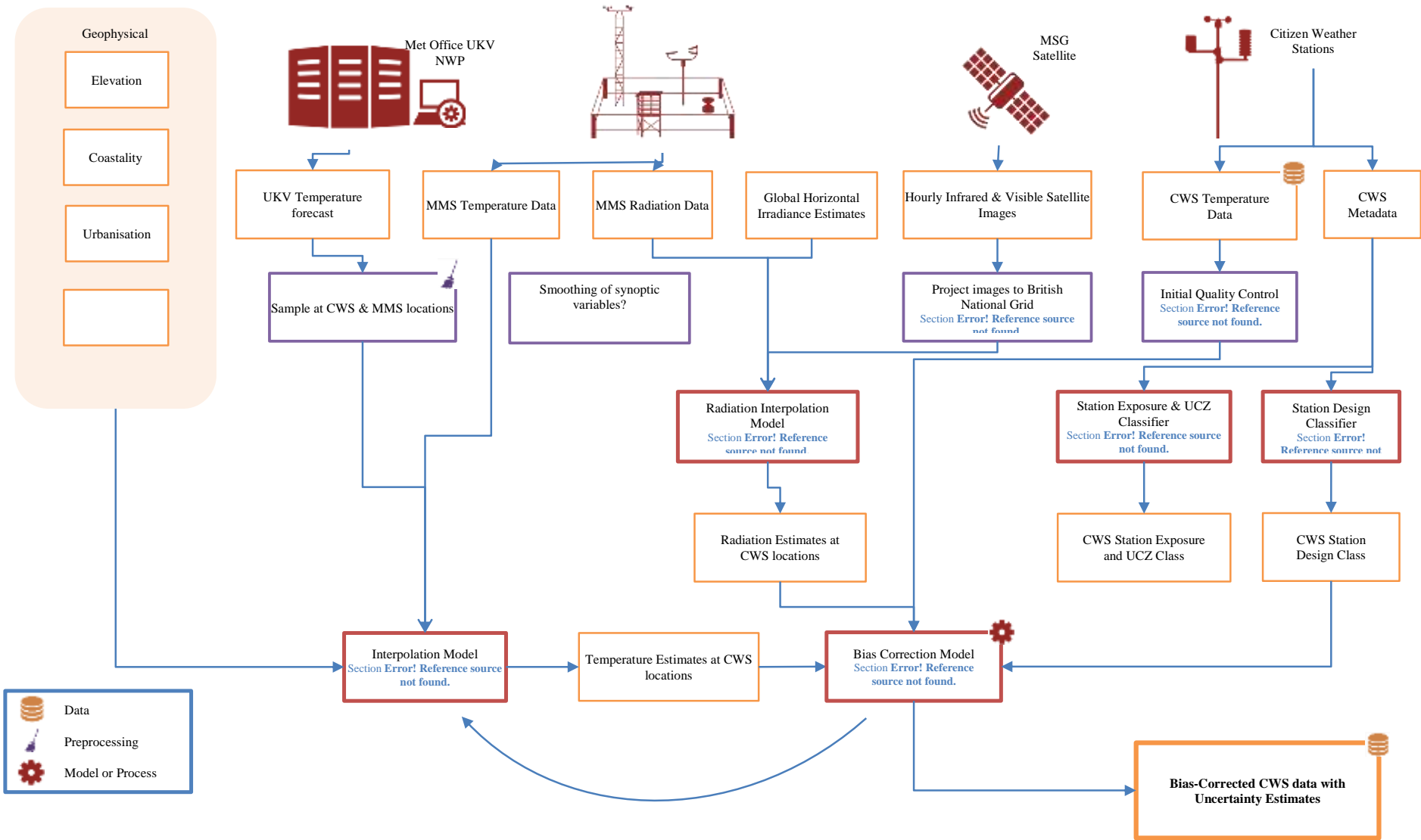
Classifier

www.weatherwired.com/classifier/classifier.php

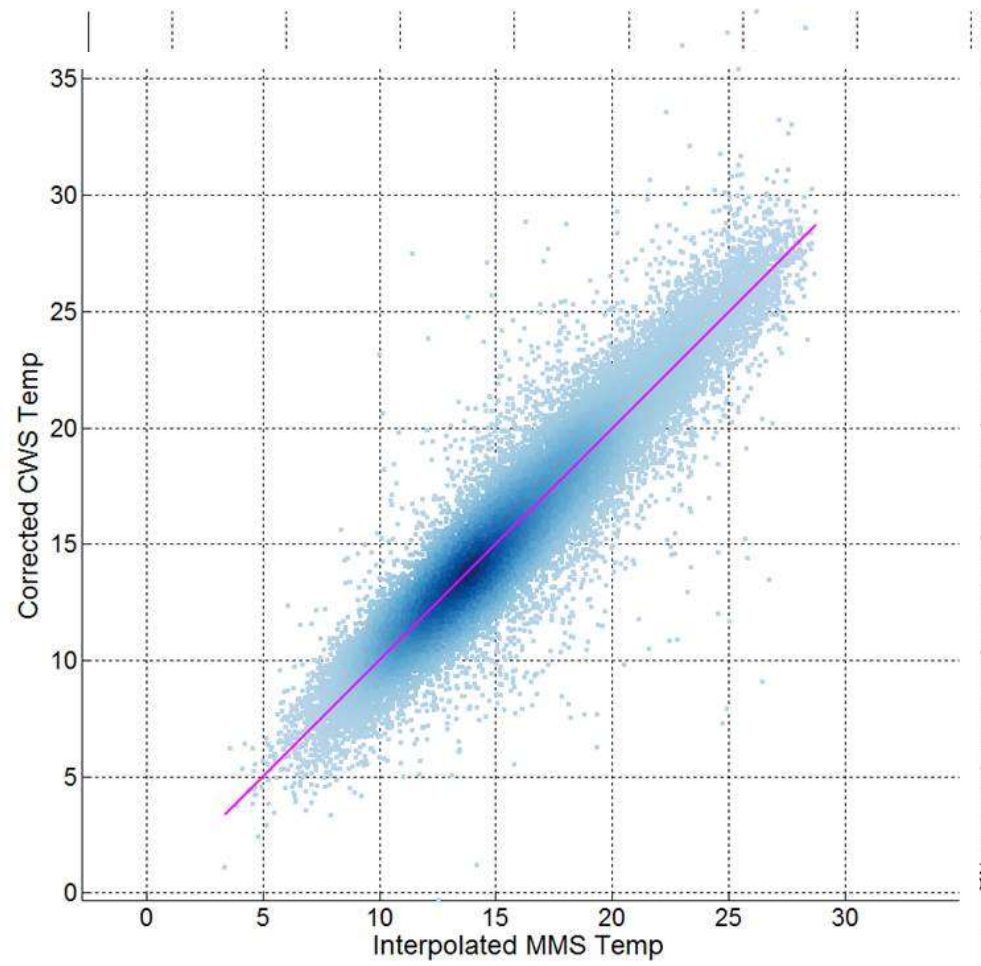
| Unclassified | Very open exposure | Open exposure | Standard exposure | Restricted exposure | Sheltered exposure | Very sheltered exposure | Rooftop Site | Traffic |
|--|---|---|---|---|---|---|---|---|
|  |  |  |  |  |  |  |  |  |
|  |  |  |  |  |  |  |  |  |
|  |  |  |  |  |  |  |  |  |
|  |  |  |  |  |  |  |  |  |
|  |  |  |  |  |  |  |  |  |

Penelope, you are classifying WOW stations by exposure.

Help

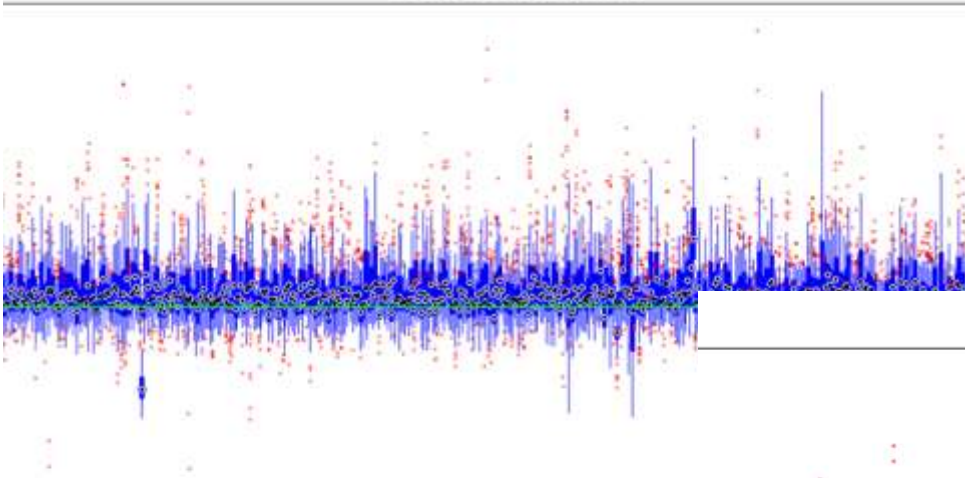


You can fixing things

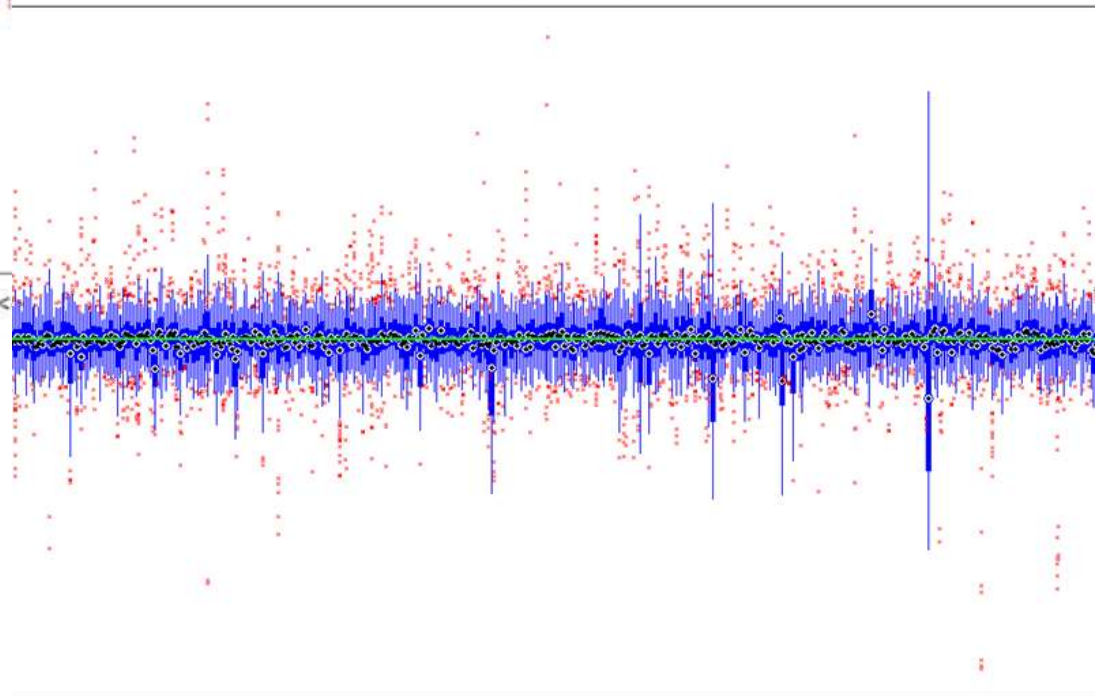


To an extent

CWS(uncorrected) - IMMS



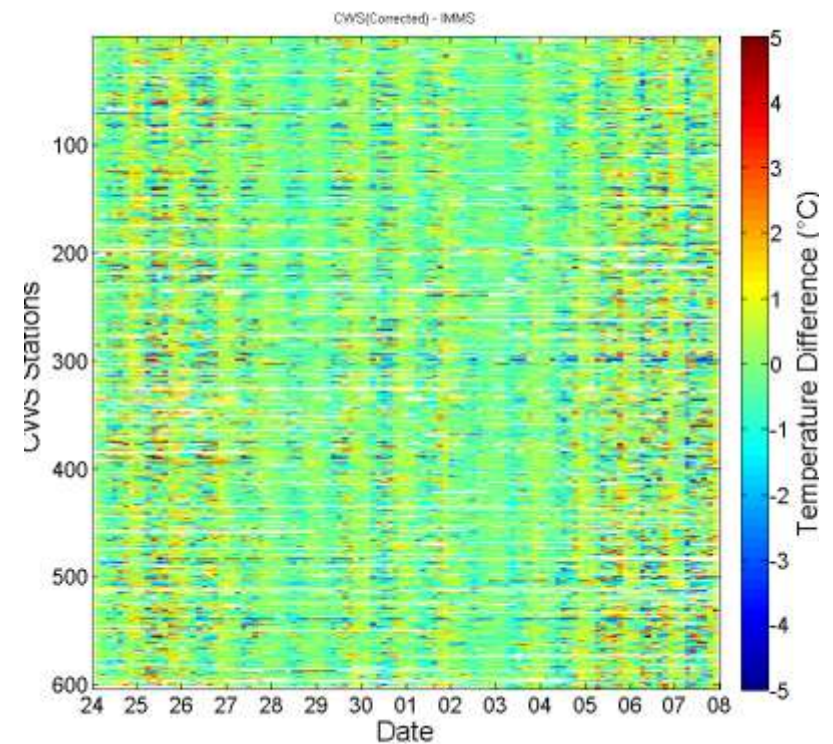
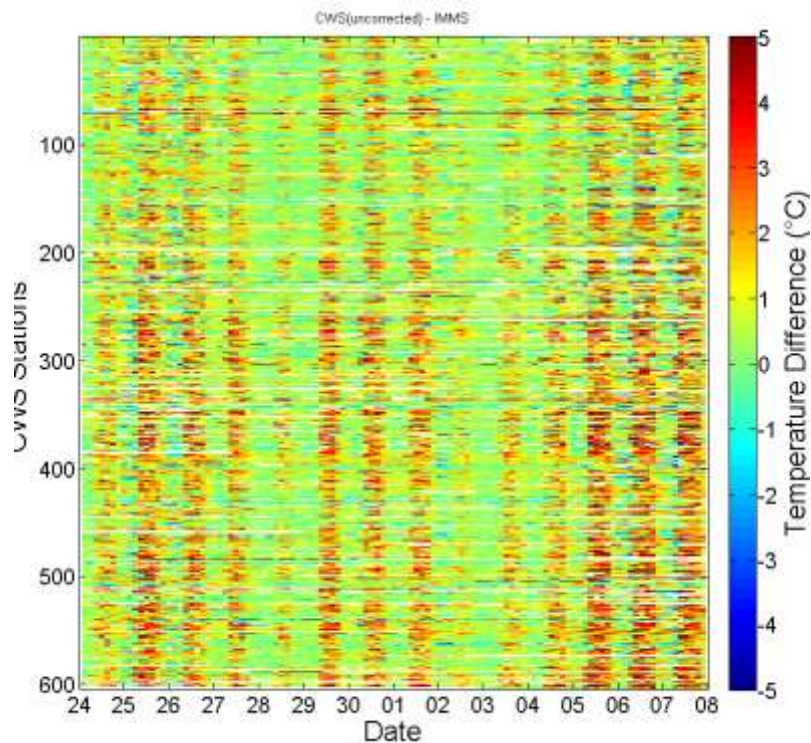
CWS(Corrected) - IMMS



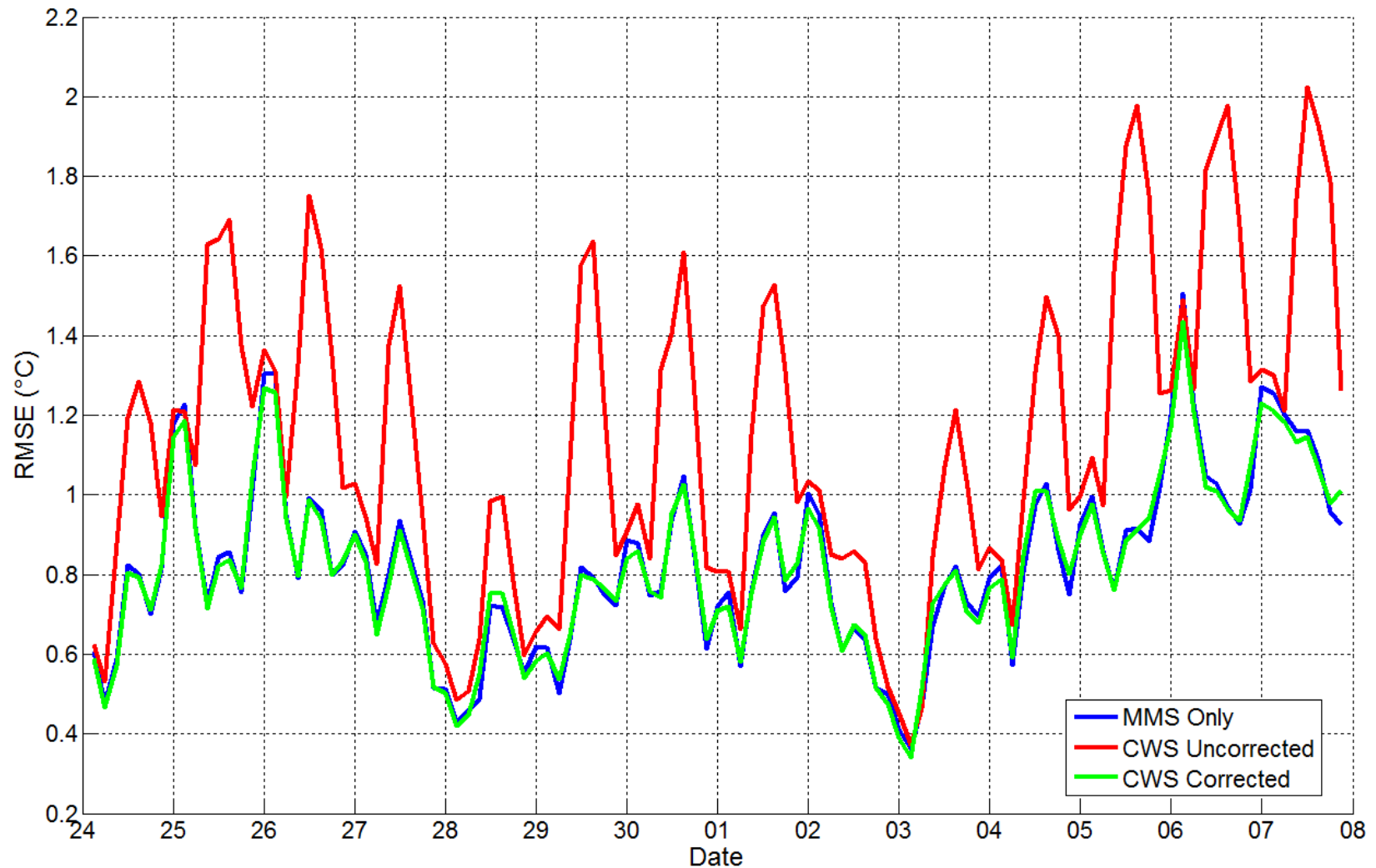
Stations - Ordered by elevation (Low <

Stations (ordered by elev)

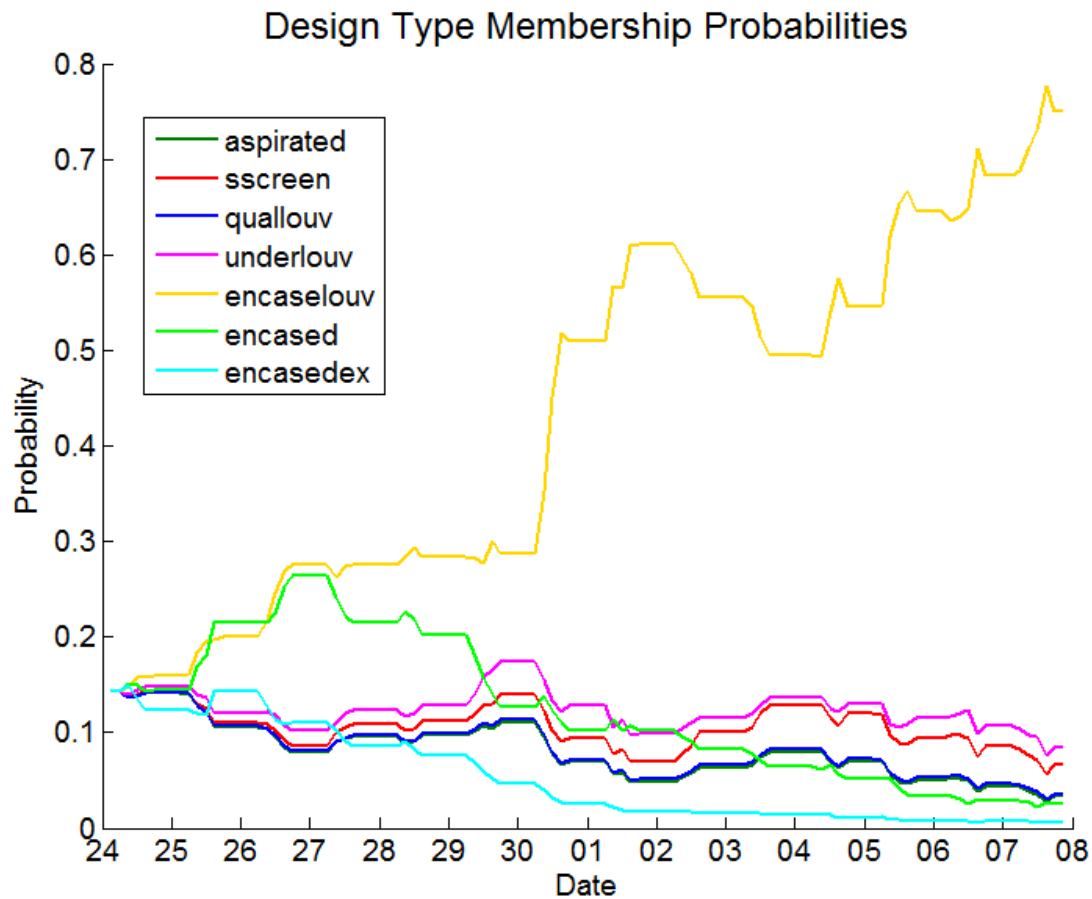
Fixing everything is not going to happen



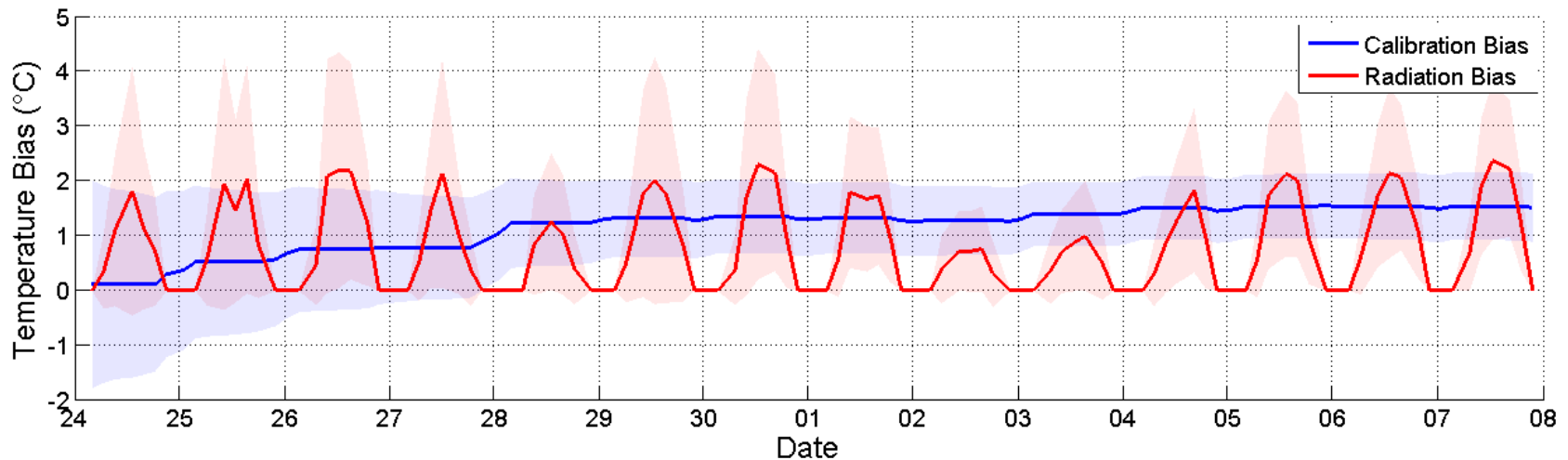
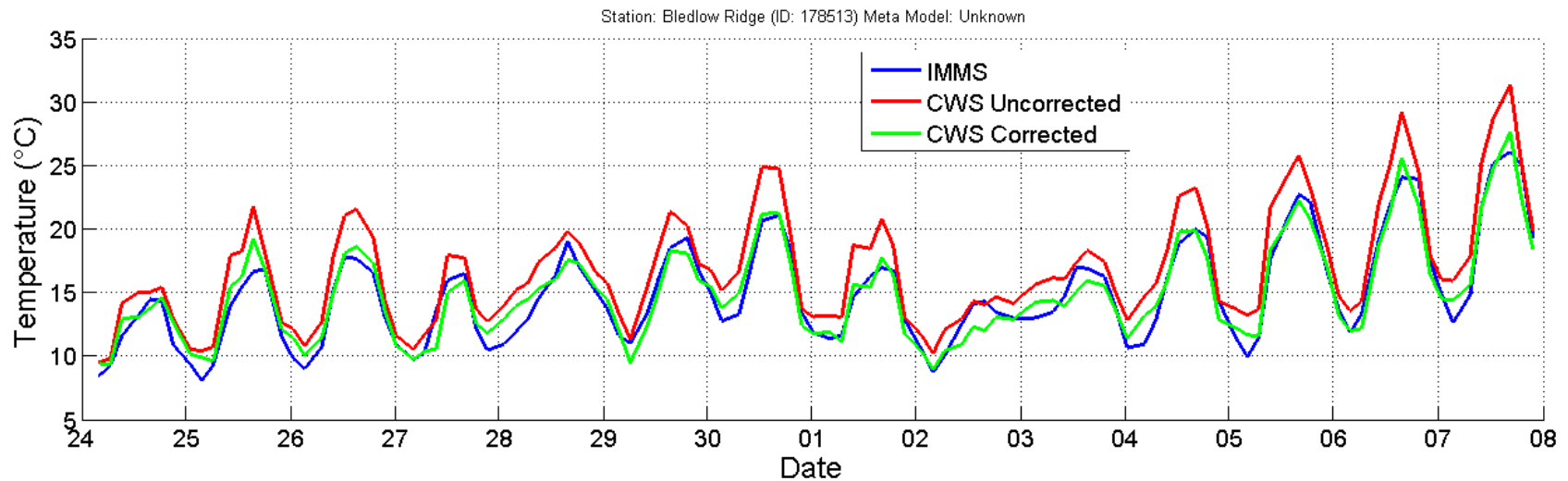
Do all the hard work and ...



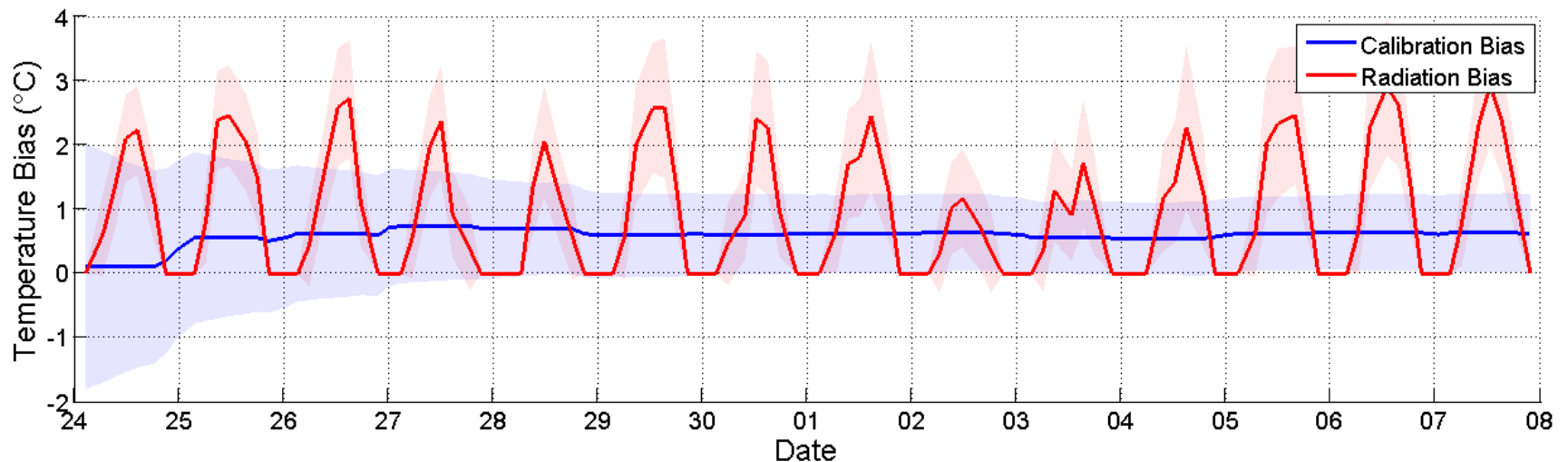
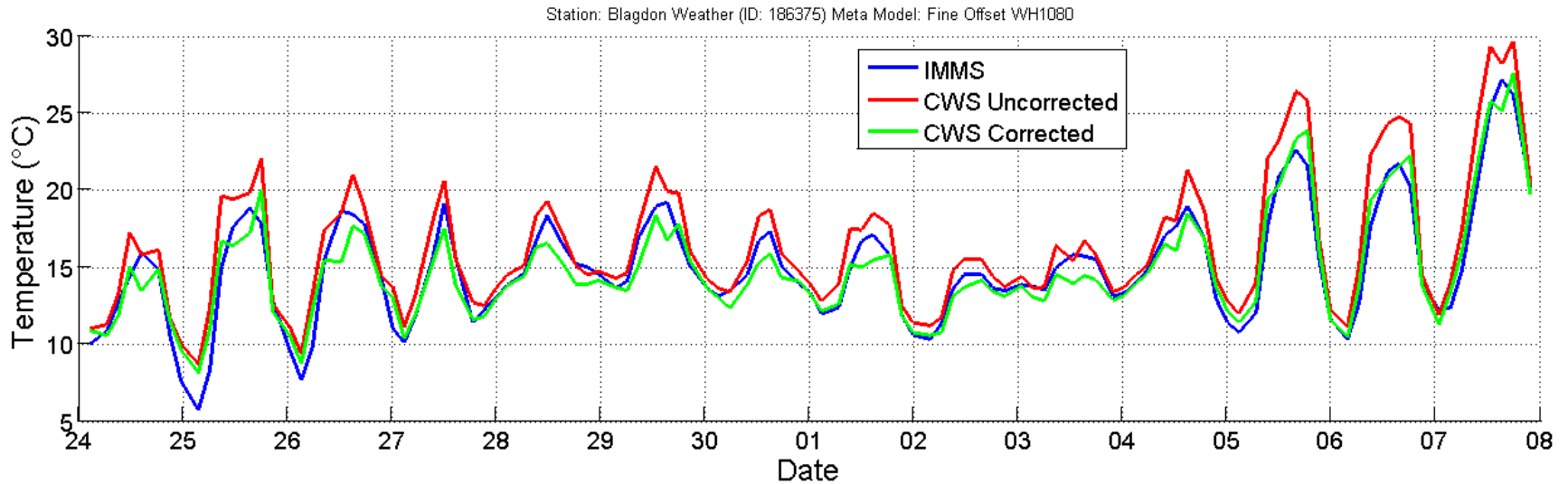
But we can learn a lot



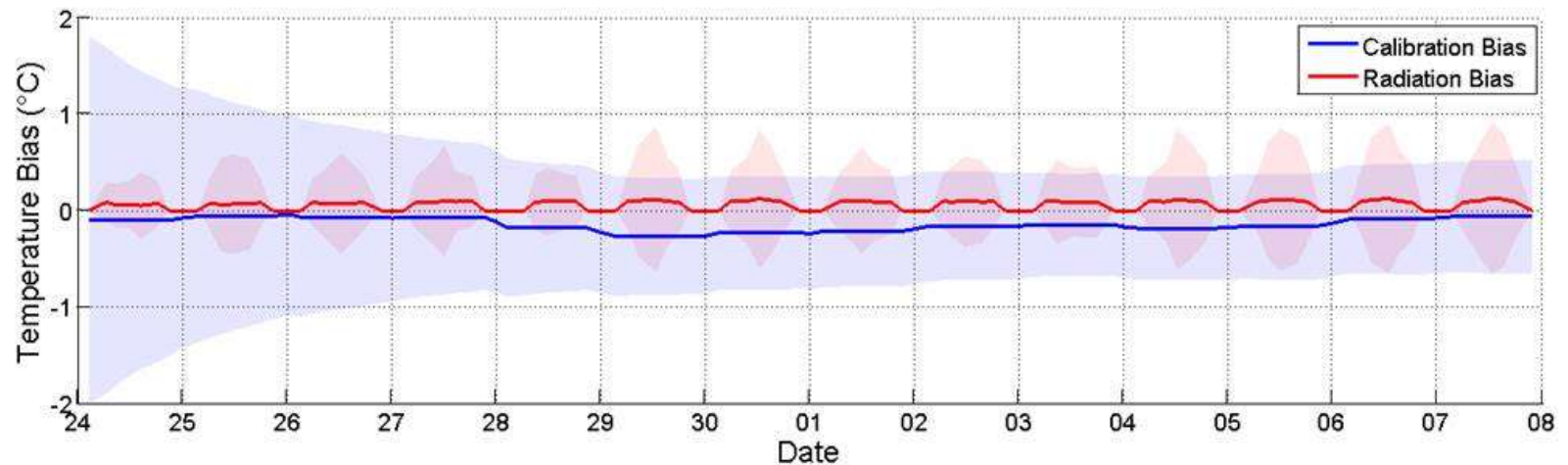
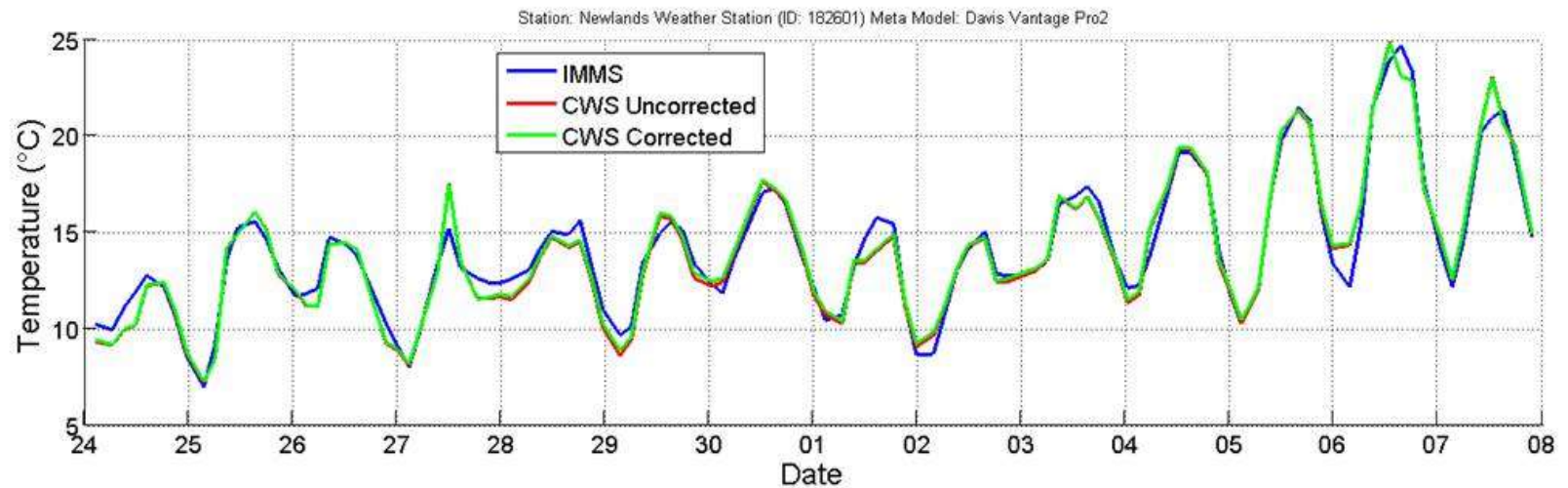
Mitigating some 'nasty' issues



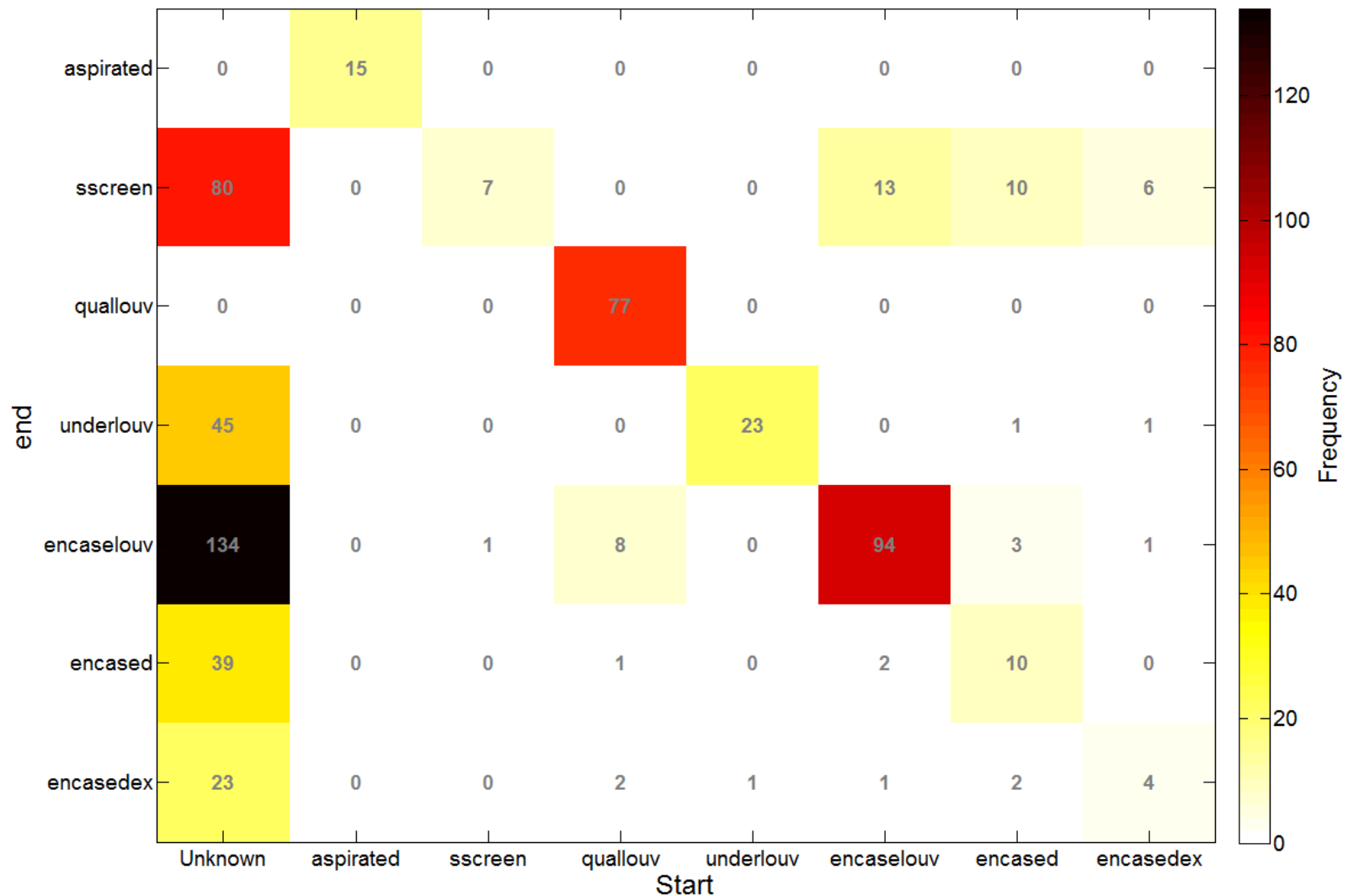
Or simply confirm what we see



Even for the 'best' stations



Simple models, but significant insight



Summary

- Don't try and do a purely graphical talk!
- Be clear on your aims ...
- Validate probabilistic models probabilistically
 - if you care!
- Be prepared to spend 80% of your time exploring the mess that is your data
- I'd strongly prefer simple (and fast to run) models
 - allows prior sensitivity, model exploration and cross validation (without waiting)
- Be clear what is 'good enough'
 - your model will never be perfect on real data – remember it is a model
 - I've never seen real data that actually comes from a Gaussian process
- Thanks!